

WAAS CH 40302 W35A	APP CRS 355°	Rwy Idg TDZE Apt Elev	4488 70 70
--	------------------------	-----------------------------	---------------------------------------

RNAV (GPS) RWY 35

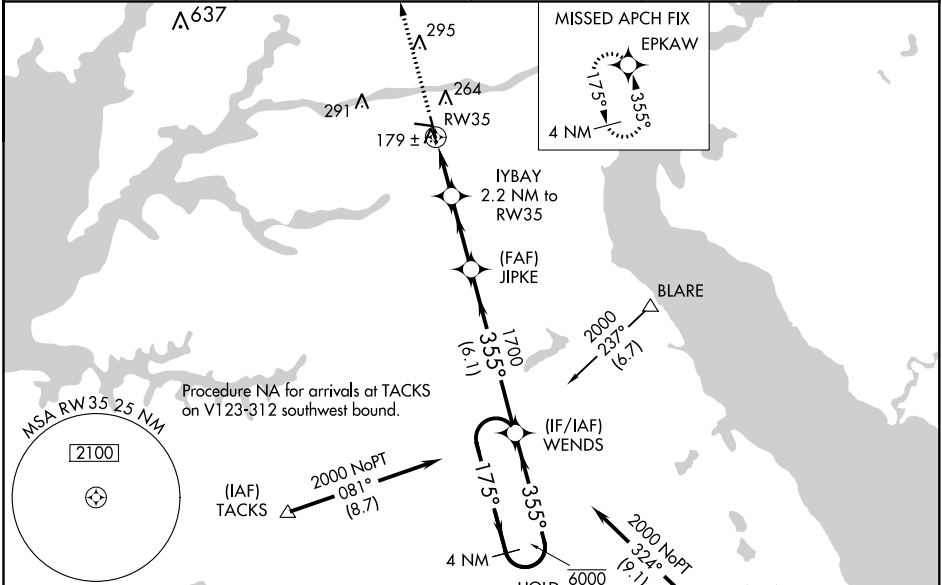
SUMMIT (EVY)

RNP APCH.

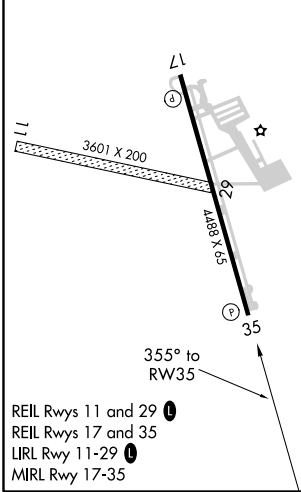
Baro-VNAV and VDP NA when using Wilmington altimeter setting. Rwy 35 helicopter visibility reduction below 3/4 SM NA. For uncompensated Baro-VNAV systems, LNAV/VNAV NA below -15°C or above 47°C. When local altimeter setting not received, use Wilmington altimeter setting and increase all DA 27 feet, all MDA 40 feet and LNAV Cat C visibility 1/8 SM.

MISSED APPROACH: Climb to 2000 direct EPKAW and hold.

AWOS-3 132.325	PHILADELPHIA APP CON 118.35 323.1	CLNC DEL 125.3	UNICOM 122.725 (CTAF)	123.5
--------------------------	---	--------------------------	---------------------------------	--------------



ELEV 70	TDZE 70
---------	---------



REIL Rwy 11 and 29

REIL Rwy 17 and 35

LIRL Rwy 11-29

MIRL Rwy 17-35

2000	EPKAW	VGSI and RNAV glidepath not coincident (VGSI Angle 3.00/TCH 41).		4 NM Holding Pattern	
		IYBAY 2.2 NM to RW35	JIPKE 1700	WENDS	
* LNAV only.	* 1.3 NM to RW35			175° → 6000	
				← 355° 2000	
		* 820	1700	GP 3.00° TCH 50	
		1.3 NM	0.9 NM	2.7 NM	6.1 NM
CATEGORY	A	B	C	D	
LPV DA	320-1 250 (300-1)				
LNAV/VNAV DA	480-1½ 410 (500-1½)				
LNAV MDA	440-1 370 (400-1)			440-1¼ 370 (400-1¼)	

NE-3, 25 FEB 2021 to 25 MAR 2021

NE-3, 25 FEB 2021 to 25 MAR 2021