

WAAS CH 65638 W23A	APP CRS 235°	Rwy Idg TDZE 78 Apt Elev 79	5000
--	------------------------	---	-------------

RNAV (GPS) RWY 23

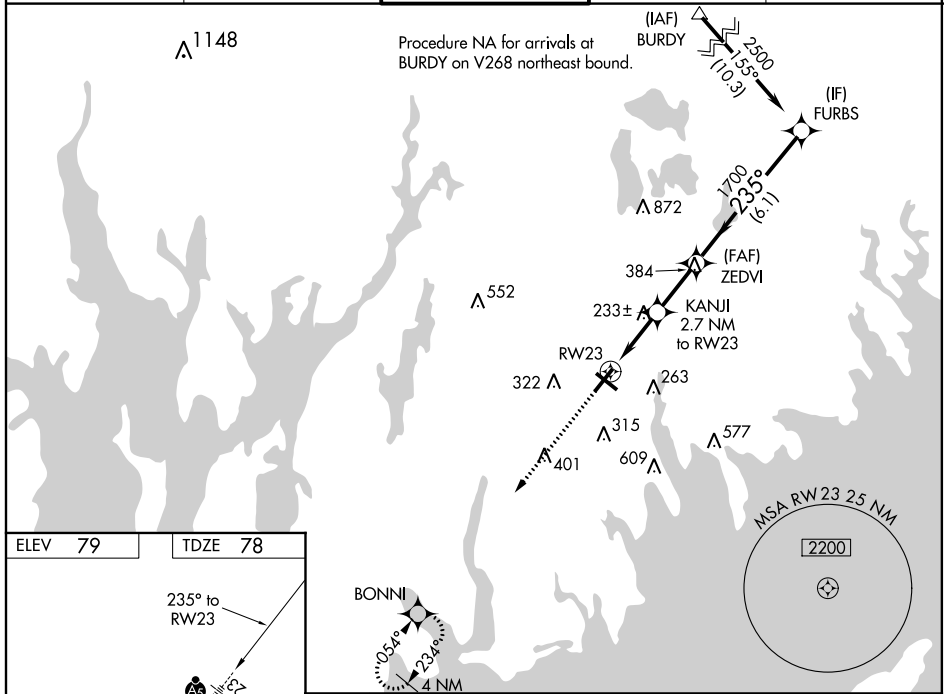
NEW BEDFORD RGNL (E/WB)

Baro-VNAV and VDP NA when using Taunton altimeter setting. For uncompensated Baro-VNAV systems, LNAV/VNAV NA below -16°C (4°F) or above 54°C (130°F). DME/DME RNP-0.3 NA. Helicopter visibility reduction below 3/4 SM NA. When local altimeter setting not received, use Taunton altimeter setting and increase all DA 34 feet and all MDA 40 feet. Increase LNAV and Circling Cat C/D visibility 1/4 mile. For inop MALSRL, increase LPV all Cats visibility 1/8 mile, LNAV/VNAV and LNAV Cat A/B visibility 1/4 mile. For inop MALSRL, when using Taunton altimeter setting, increase LNAV/VNAV all Cats visibility 3/8 mile, LNAV Cat A/B visibility 1/4 mile and Cat C/D visibility 3/8 mile.

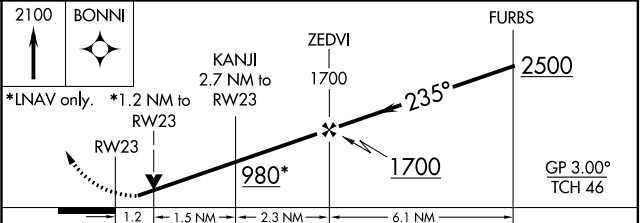
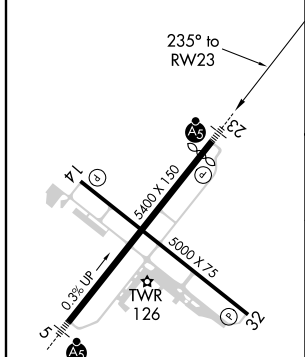


MISSED APPROACH:
Climb to 2100 direct BONNI and hold.

ATIS 126.85	PROVIDENCE APP CON* 128.7 269.525	NEW BEDFORD TOWER* 118.1 (CTAF) 0239.0	GND CON 121.9	UNICOM 122.95
-----------------------	---	--	-------------------------	-------------------------



ELEV 79	TDZE 78
---------	---------



CATEGORY	A	B	C	D
LPV DA		359-3/4	281 (300-3/4)	
LNAV/VNAV DA		378-3/4	300 (300-3/4)	
LNAV MDA		500-3/4	422 (500-3/4)	
CIRCLING	600-1	640-1	720-1 3/4	940-2 3/4
	521 (600-1)	561 (600-1)	641 (700-1 3/4)	861 (900-2 3/4)

NE-1, 25 FEB 2021 to 25 MAR 2021

NE-1, 25 FEB 2021 to 25 MAR 2021