

LOC I-CAC 111.7	APP CRS 174°	Rwy Idg TDZE Apt Elev	6705 1530 1533
---------------------------	------------------------	-----------------------------	---

ILS or LOC RWY 17

NEWTON-CITY-COUNTY (E W K)

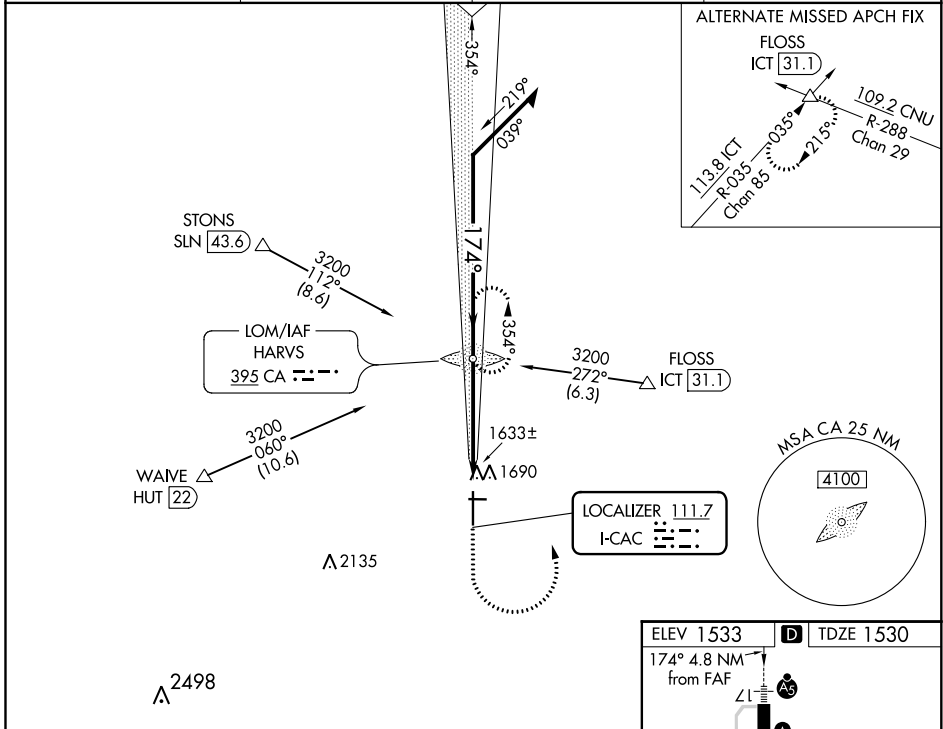
ADF required for Procedure entry. ADF required.

▼ When local altimeter setting not received, use Wichita Dwight D Eisenhower National altimeter setting: increase S-ILS 17 to 1830 feet; increase all MDAs 100 feet and visibility S-LOC 17 Cat C ¾ SM and S-LOC 17 Cat D ¼ SM. For inop ALS, increase S-LOC 17 Cat C/D visibility to 1 SM. Circling Rwy 8, 26 NA at night. For inop ALS when using Wichita Dwight D Eisenhower National altimeter setting, increase S-ILS 17 visibility to ¾ SM and S-LOC 17 Cat C/D to 1 ¾ SM.



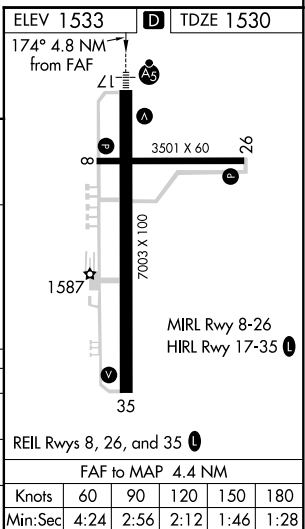
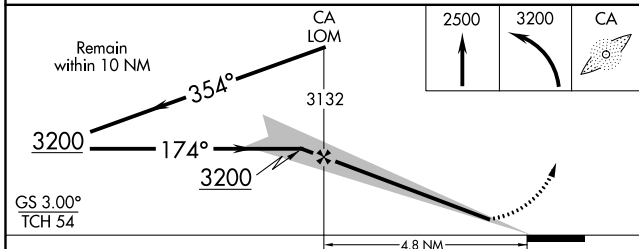
MISSED APPROACH: Climb to 2500 then climbing left turn to 3200 direct HARVS LOM and hold.

AWOS-3PT 123.875	WICHITA APP CON 125.5 306.2	CLNC DEL 126.55	UNICOM 123.0 (CTAF)
----------------------------	---------------------------------------	---------------------------	-------------------------------



NC-2, 25 FEB 2021 to 25 MAR 2021

NC-2, 25 FEB 2021 to 25 MAR 2021



CATEGORY	A	B	C	D
S-ILS 17	1730-½ 200 (200-½)			
S-LOC 17	1900-½ 370 (400-½)	1900-⅝ 370 (400-¾)	1900-¾ 370 (400-¾)	
CIRCLING	2000-1 467 (500-1)	2000-1½ 467 (500-1½)	2100-2 567 (600-2)	