


WAAS CH 50109 W17A	APP CRS 174°	Rwy Idg TDZE 6705 1530 Apt Elev 1533
--	------------------------	--

RNAV (GPS) RWY 17

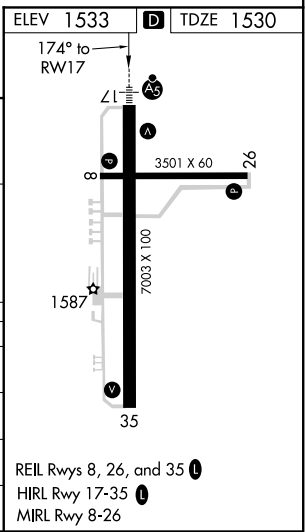
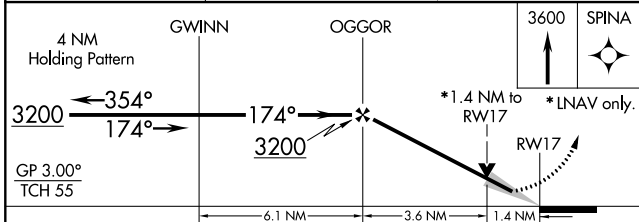
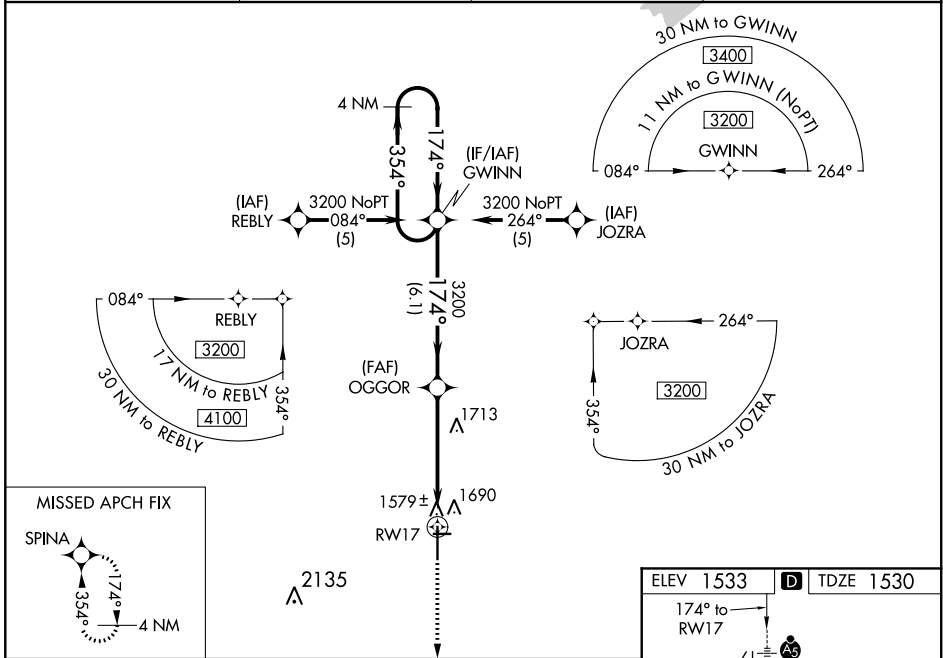
NEWTON-CITY-COUNTY (E WK)

RNP APCH.

⚠ When local altimeter setting not received, use Wichita Dwight D Eisenhower National altimeter setting: increase LPV DA to 1891 feet and visibility 1/2 SM; increase all MDAs 100 feet and visibility Cat C and LNAV Cat D 1/4 SM. VDP NA when using Wichita Dwight D Eisenhower National altimeter setting. For inop ALS, increase LPV visibility to 3/8 SM and LNAV Cat C/D to 1/2 SM. For inop ALS when using Wichita Dwight D Eisenhower National altimeter setting, increase LPV visibility to 1 SM. Circling Rwy 8, 26 NA at night.

MALSR  MISSED APPROACH: Climb to 3600 direct SPINA and hold.

AWOS-3PT 123.875	WICHITA APP CON 125.5 306.2	CLNC DEL 126.55	UNICOM 123.0 (CTAF) 0
----------------------------	---------------------------------------	---------------------------	--



CATEGORY	A	B	C	D
LPV DA	1791-1/2 261 (300-1/2)			
LNAV/VNAV DA	NA			
LNAV MDA	2020-1/2 490 (500-1/2)	2020-1 490 (500-1)		
CIRCLING	2020-1 487 (500-1)	2020-1 1/2 487 (500-1 1/2)	2100-2 567 (600-2)	

NC-2, 25 FEB 2021 to 25 MAR 2021

NC-2, 25 FEB 2021 to 25 MAR 2021