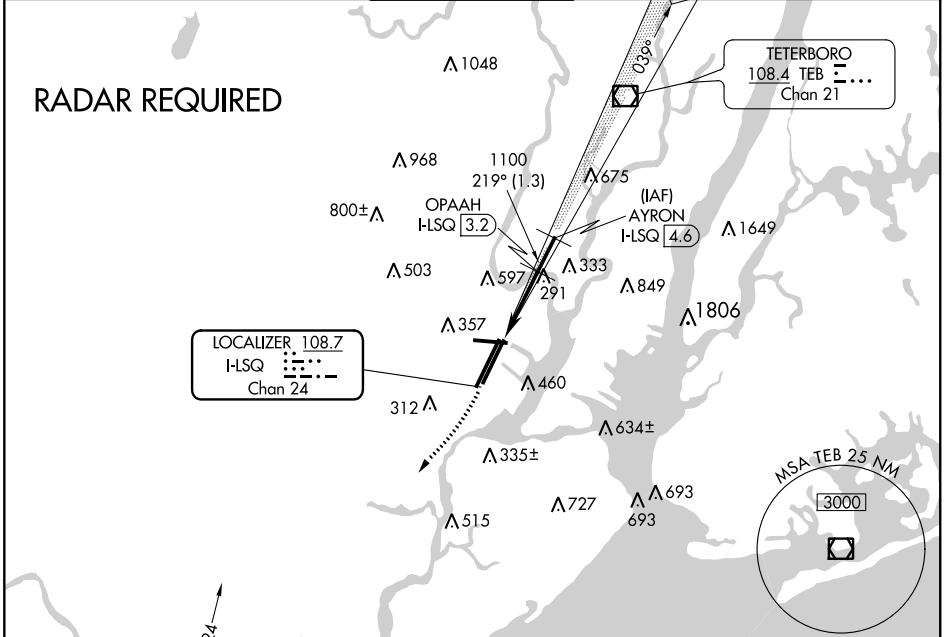


LOC/DME I-LSQ 108.7 Chan 24	APP CRS 219°	Rwy ldg 8207 TDZE 11 Apt Elev 18
---	------------------------	---

COPTER ILS/DME RWY 22L

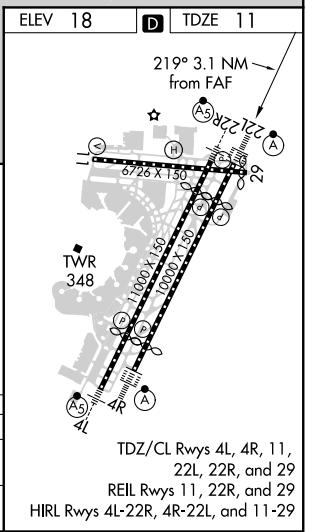
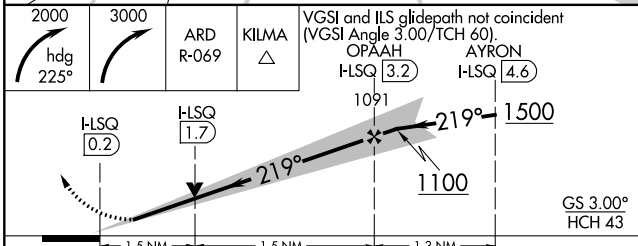
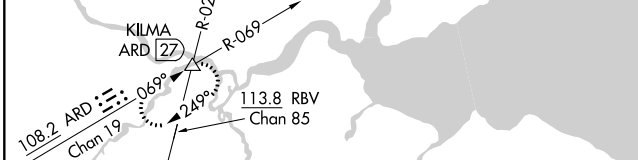
NEWARK LIBERTY INTL (EWR)

▼ MISSED APPROACH: Climbing right turn to 2000 heading 225° then climbing right turn to 3000 via ARD R-069 to KILMA INT and hold.					
D-ATIS 115.7 134.825	NEW YORK APP CON 128.55 379.9	NEWARK TOWER 118.3 257.6	GND CON 121.8	CLNC DEL 118.85	CPDLC



NE-2, 25 FEB 2021 to 25 MAR 2021

NE-2, 25 FEB 2021 to 25 MAR 2021



CATEGORY	COPTER	B	C	D
H-ILS 22L	211/12 200 (200-¼)		NA	
H-LOC 22L	560/12 549 (600-¼)		NA	

TDZ/CL Rwy 4L, 4R, 11, 22L, 22R, and 29
REIL Rwy 11, 22R, and 29
HIRL Rwy 4L-22R, 4R-22L, and 11-29