

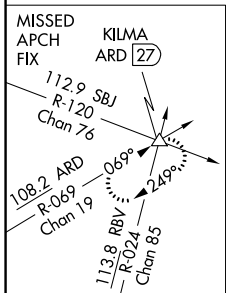
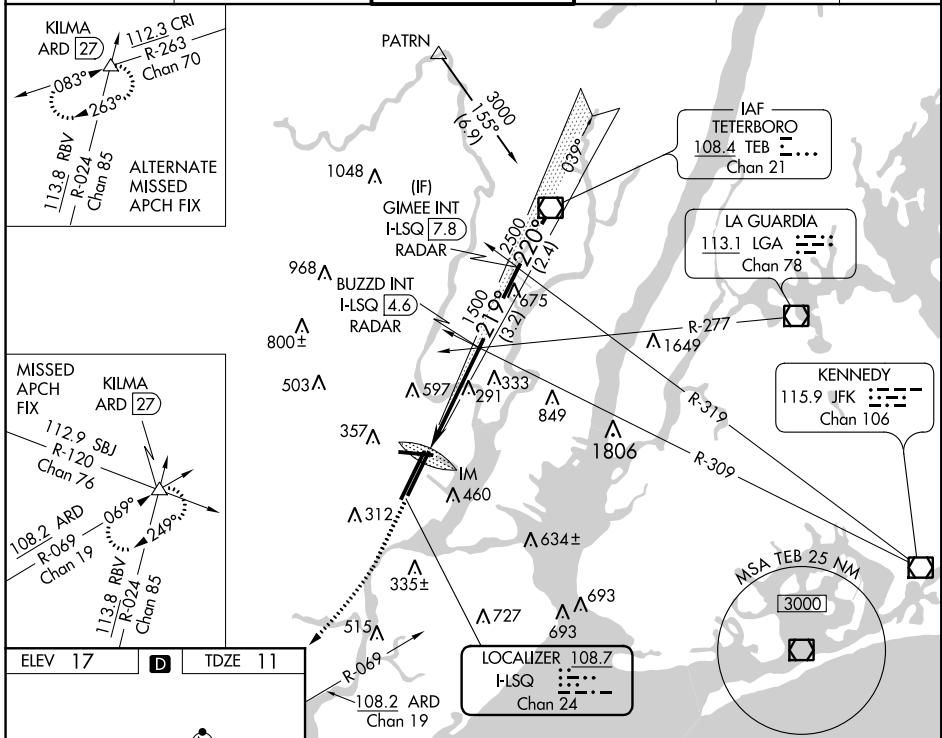
LOC/DME I-LSQ 108.7 Chan 24	APP CRS 219°	Rwy ldg TDZE Apt Elev	8207 11 17
---	------------------------	-----------------------------	---------------------------------------

ILS RWY 22L (CAT II & III)

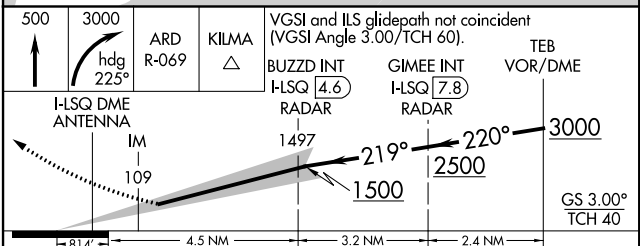
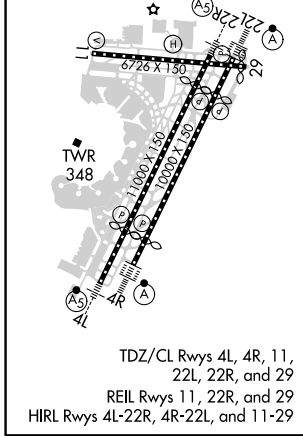
NEWARK LIBERTY INTL (EWR)

<p>▼ CAT II: RVR 1000 authorized with specific OPSPEC, MSPEC, or LOA approval and use of autoland or HUD to touchdown.</p> <p>▲ ALSF-2</p>	<p>MISSED APPROACH: Climb to 500 then climbing right turn to 3000 on heading 225° and ARD VOR/DME R-069 to KILMA INT/ARD 27 DME and hold.</p>
--	---

D-ATIS 115.7 134.825	NEW YORK APP CON 128.55 379.9	NEWARK TOWER 118.3 257.6	GND CON 121.8	CLNC DEL 118.85	CPDLC
--------------------------------	---	------------------------------------	-------------------------	---------------------------	-------



ELEV 17	D	TDZE 11
---------	----------	---------



<p>500 3000</p> <p>ARD R-069</p> <p>I-LSQ DME ANTENNA</p>	<p>KILMA</p> <p>BUZZZ INT I-LSQ 4.6</p> <p>RADAR</p>	<p>VGSI and ILS glidepath not coincident (VGSI Angle 3.00/TCH 60).</p> <p>GIMEE INT I-LSQ 7.8</p> <p>RADAR</p>	<p>TEB VOR/DME</p> <p>3000</p> <p>GS 3.00° TCH 40</p>	
CATEGORY	A	B	C	D
S-ILS 22L	CAT II RA 102/12 100 DA 111			
S-ILS 22L	CAT IIIa RVR 07			
S-ILS 22L	CAT IIIb RVR 06			
S-ILS 22L	CAT IIIc NA			

CATEGORY II & III ILS - SPECIAL AIRCREW & AIRCRAFT CERTIFICATION REQUIRED

NE-2, 25 FEB 2021 to 25 MAR 2021

NE-2, 25 FEB 2021 to 25 MAR 2021