

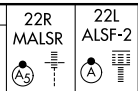
ILS or LOC RWY 22R

NEWARK LIBERTY INTL (EWR)

LOC/DME I-JNN	APP CRS	Rwy Idg	22R	22L
110.75	219°		9560	8206
Chan 44 (Y)		TDZE	10	11
		Apt Elev	17	17

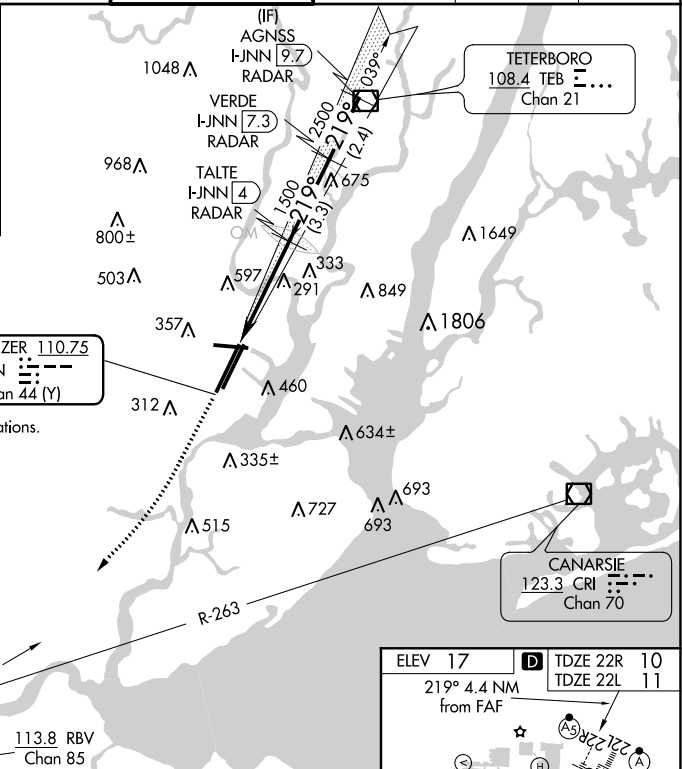
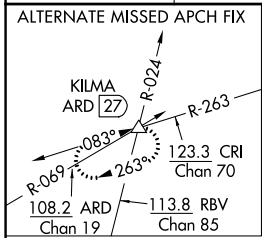
DME required. RADAR required for procedure entry.

- ▼ For inoperative ALSF-2, increase sidestep 22L Cat C visibility to 1½ mile. Inoperative table does not apply to sidestep 22L Cats A and B.
- ▲ When Circling to Rwy 29 at night, operational VGSI required, remain on or above VGSI glidepath until threshold.

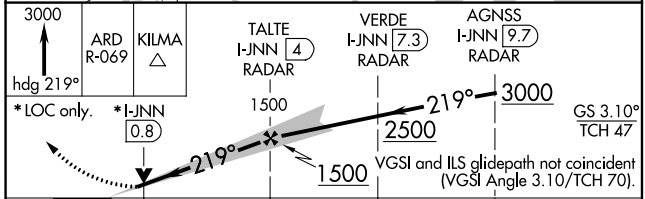
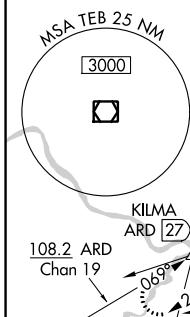


MISSED APPROACH: Climb to 3000 on heading 219° and on ARD VOR/DME R-069 to KILMA INT/ARD 27 DME and hold.

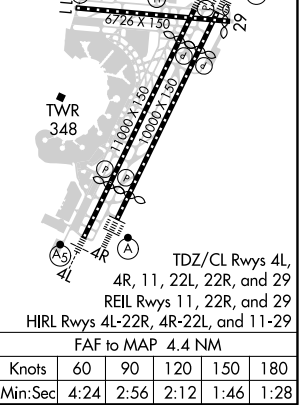
D-ATIS	NEW YORK APP CON	NEWARK TOWER	GND CON	CLNC DEL	CPDLC
115.7 134.825	128.55 379.9	118.3 257.6	121.8	118.85	



Disregard all marker beacon indications.



ELEV 17	TDZE 22R 10
219° 4.4 NM from FAF	TDZE 22L 11



CATEGORY	A	B	C	D
S-ILS 22R	210/18 200 (200-½)			
S-LOC 22R	460/24	450 (500-½)	460/45	450 (500-¾)
SIDESTEP RWY 22L	560/50 549 (600-1)			560-1½ 549 (600-1½)
◻ CIRCLING	760-1 743 (800-1)	820-1 803 (900-1)	900-2¾ 883 (900-2¾)	900-3 883 (900-3)

Knots	60	90	120	150	180
	Min:Sec	4:24	2:56	2:12	1:46

NE-2, 25 FEB 2021 to 25 MAR 2021

NE-2, 25 FEB 2021 to 25 MAR 2021