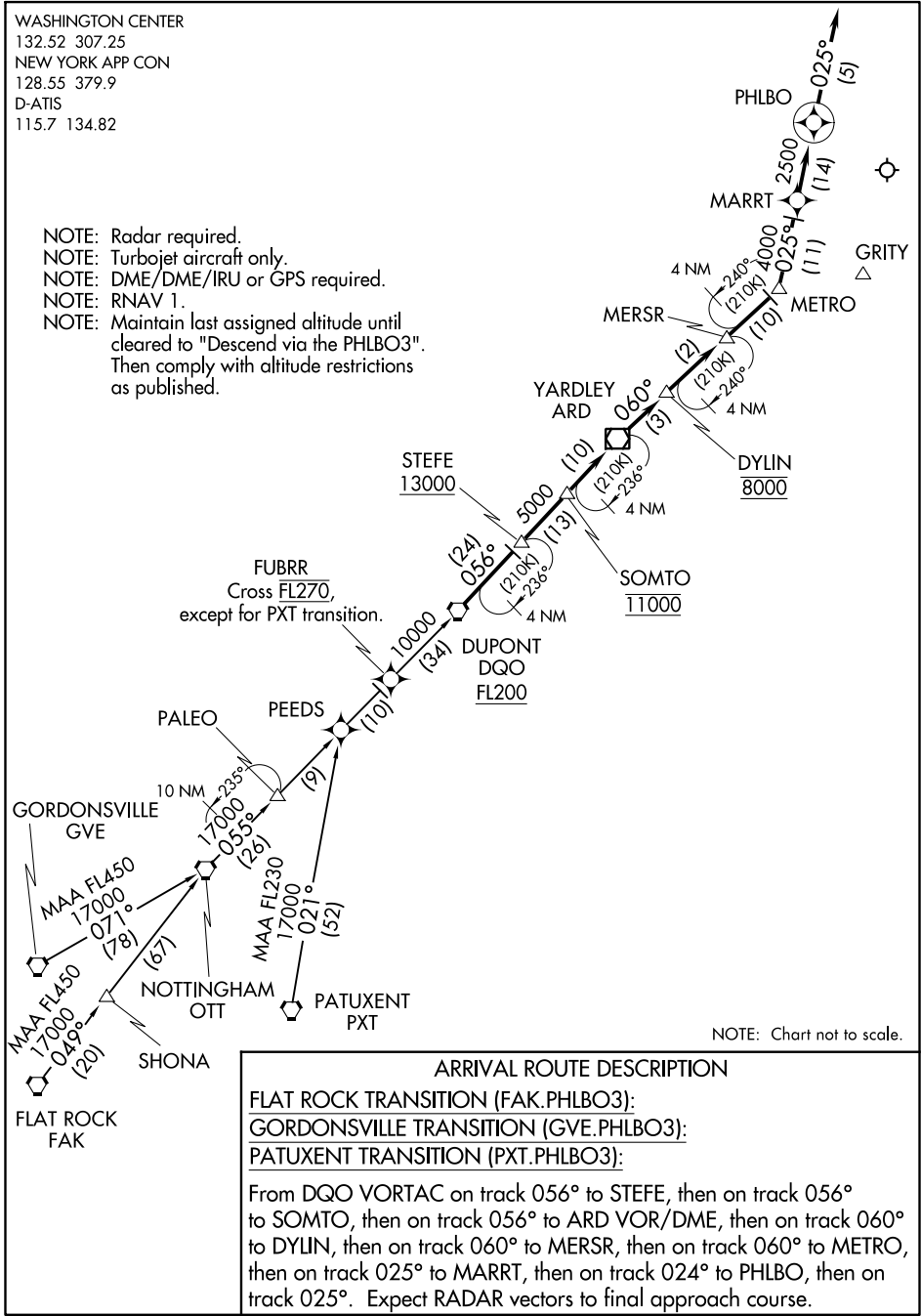


# PHLBO THREE ARRIVAL (RNAV)

WASHINGTON CENTER  
132.52 307.25  
NEW YORK APP CON  
128.55 379.9  
D-ATIS  
115.7 134.82

- NOTE: Radar required.
- NOTE: Turbojet aircraft only.
- NOTE: DME/DME/IRU or GPS required.
- NOTE: RNAV 1.
- NOTE: Maintain last assigned altitude until cleared to "Descend via the PHLBO3". Then comply with altitude restrictions as published.



NE-2, 25 FEB 2021 to 25 MAR 2021

NE-2, 25 FEB 2021 to 25 MAR 2021

# PHLBO THREE ARRIVAL (RNAV)