

WAAS CH <b>77524</b> <b>W22B</b>	APP CRS <b>219°</b>	Rwy Idg TDZE Apt Elev	<b>9560</b> <b>10</b> <b>17</b>
--	------------------------	-----------------------------	---------------------------------------

# RNAV (GPS) RWY 22R

NEWARK LIBERTY INTL (EWR)

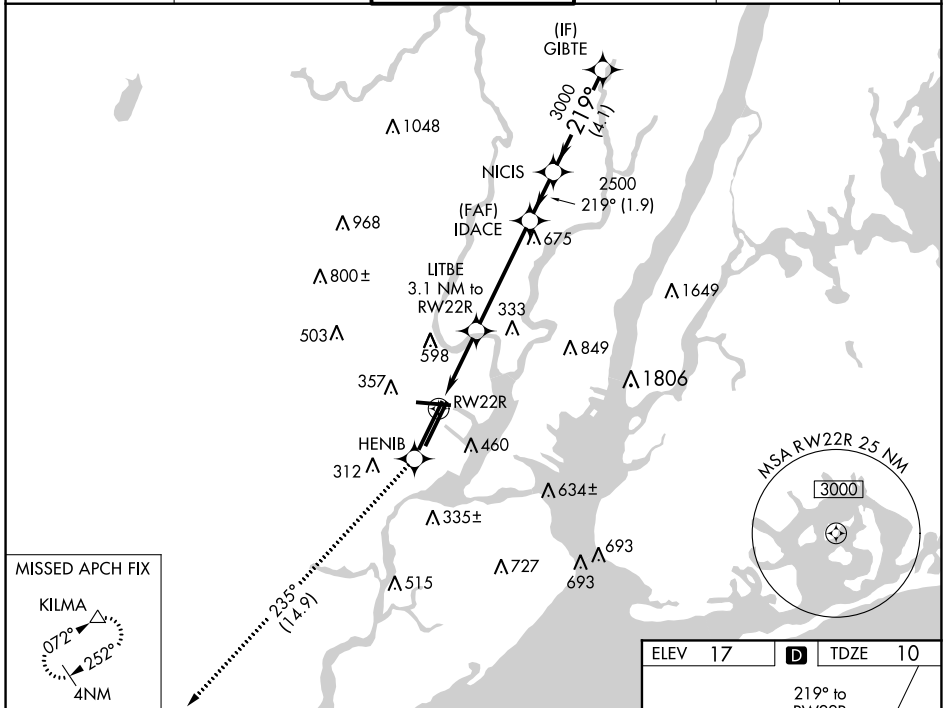
RNP APCH.

For inop ALS, increase LPV visibility to RVR 6000 all Cats. When Circling to Rwy 29 at night, operational VGSI required, remain on or above VGSI glidepath until threshold.



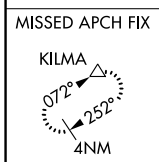
MISSED APPROACH: Climb to 3000 direct HENIB and on track 235° to KILMA and hold.

D-ATIS <b>115.7 134.825</b>	NEW YORK APP CON <b>128.55 379.9</b>	NEWARK TOWER <b>118.3 257.6</b>	GND CON <b>121.8</b>	CLNC DEL <b>118.85</b>	CPDLC
--------------------------------	---	------------------------------------	-------------------------	---------------------------	-------



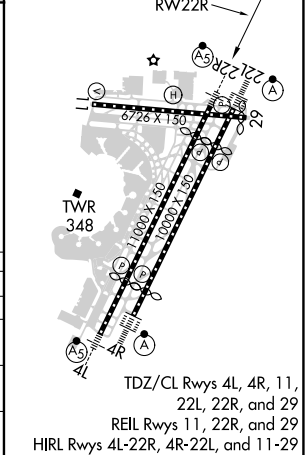
NE-2, 25 FEB 2021 to 25 MAR 2021

NE-2, 25 FEB 2021 to 25 MAR 2021



ELEV 17	<b>D</b>	TDZE 10
---------	----------	---------

3000 HENIB tr 235°	KILMA	VGSI and RNAV glidepath not coincident (VGSI Angle 3.10/TCH 70).		
* LNAV only.	LITBE 3.1 NM to RW22R	IDACE	NICIS	GIBTE
	* 1.7 NM to RW22L			
		1040	2500	3000
		1.7 NM	1.4 NM	4.4 NM
				1.9 NM
				4.1 NM
CATEGORY	A	B	C	D
LPV DA		361/40	351 (400-¾)	
LNAV/VNAV DA		NA		
LNAV MDA	620/24	610 (700-½)	620/60 610 (700-1¼)	620-1½ 610 (700-1½)
<b>C</b> CIRCLING	760-1¼ 743 (800-1¼)	820-1¼ 803 (800-1¼)	900-2¾ 883 (900-2¾)	900-3 883 (900-3)



# RNAV (GPS) RWY 22R