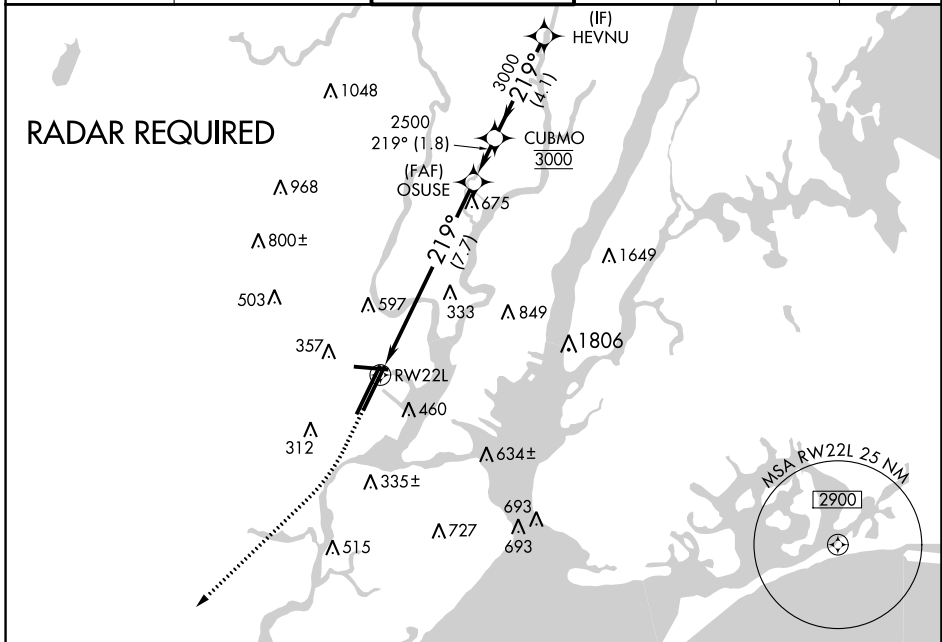


APP CRS <b>219°</b>	Rwy Idg <b>8207</b>
	TDZE <b>11</b>
	Apt Elev <b>17</b>

# RNAV (RNP) Y RWY 22L

NEWARK LIBERTY INTL (EWR)

For uncompensated Baro-VNAV systems, procedure NA below -13°C (9°F) or above 54°C (130°F). GPS required.	ALSF-2 	MISSED APPROACH: Climb to 600 then climbing right turn to 3000 direct KILMA and hold.			
			D-ATIS <b>115.7 134.825</b>	NEW YORK APP CON <b>128.55 379.9</b>	NEWARK TOWER <b>118.3 257.6</b>

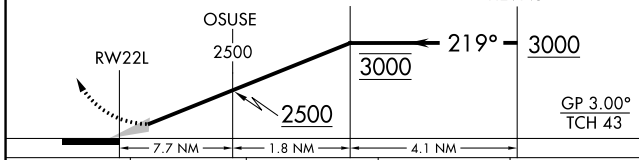


NE-2, 25 FEB 2021 to 25 MAR 2021

NE-2, 25 FEB 2021 to 25 MAR 2021



600 3000 KILMA VGSi and RNAV glidepath not coincident (VGSi Angle 3.00/TCH 60)



CATEGORY	A	B	C	D
RNP 0.30 DA	436/50		425 (500-1)	

**AUTHORIZATION REQUIRED**

