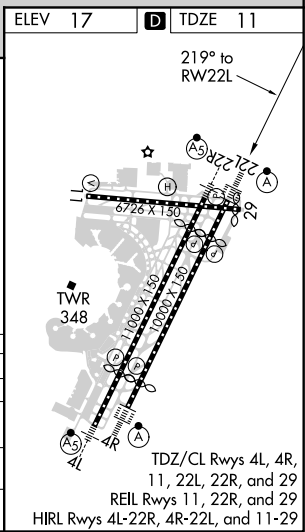
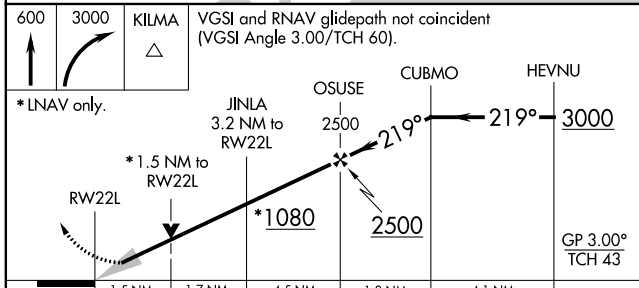
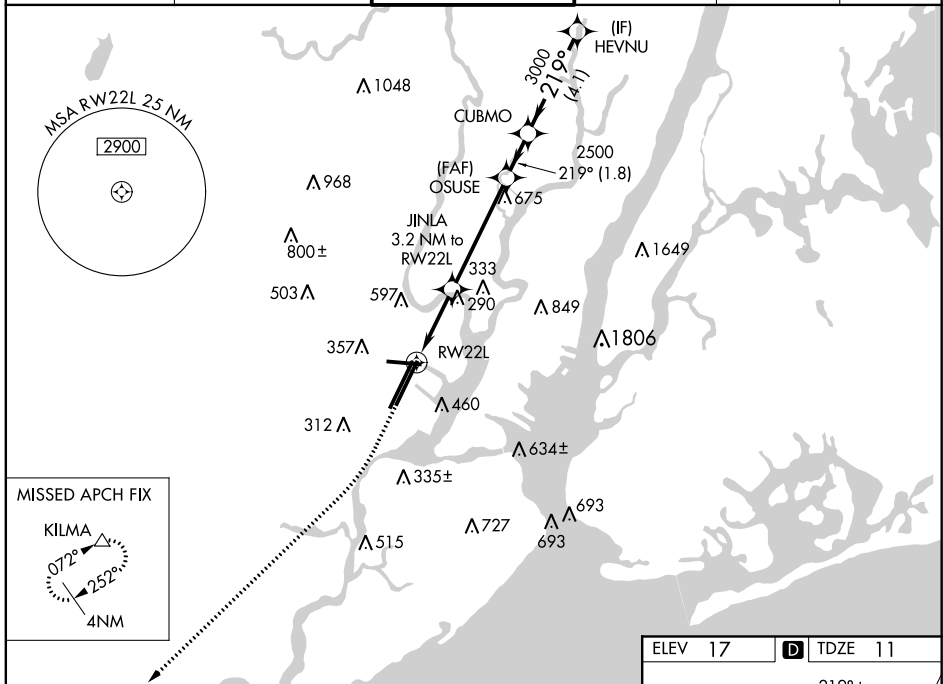


WAAS CH 70324 W22A	APP CRS 219°	Rwy Idg 8207 TDZE 11 Apt Elev 17
----------------------------------------	------------------------	-------------------------------------------------------------

RNAV (GPS) Z RWY 22L

NEWARK LIBERTY INTL (EWR)

RNP APCH.		NEWARK TOWER 118.3 257.6		GND CON 121.8	CLNC DEL 118.85	CPDLC
⚠ For uncompensated Baro-VNAV systems, LNAV/VNAV NA below -13°C or above 54°C. For inop ALS, increase LNAV/VNAV all Cats visibility to 1 3/8 mile. When Circling to Rwy 29 at night, operational VGSI required, remain on or above VGSI glidepath until threshold. ⚠ MISSED APPROACH: Climb to 600 then climbing right turn to 3000 direct KILMA and hold.				ALSF-2 		



CATEGORY	A	B	C	D
LPV DA		211/18	200 (200-1/2)	
LNAV/VNAV DA		462/50	451 (500-1)	
LNAV MDA	560/24	549 (600-1/2)	560/60	549 (600-1 1/4)
CIRCLING	760-1 743 (800-1)	820-1 803 (900-1)	900-2 3/4 883 (900-2 3/4)	900-3 883 (900-3)

NE-2, 25 FEB 2021 to 25 MAR 2021

NE-2, 25 FEB 2021 to 25 MAR 2021