

VOR/DME JFK	APP CRS	Rwy ldg	<b>6726</b>
<b>115.9</b>	<b>115°</b>	TDZE	<b>17</b>
Chan <b>106</b>		Apt Elev	<b>17</b>

# VOR RWY 11

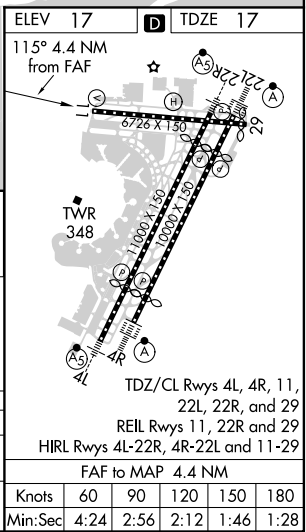
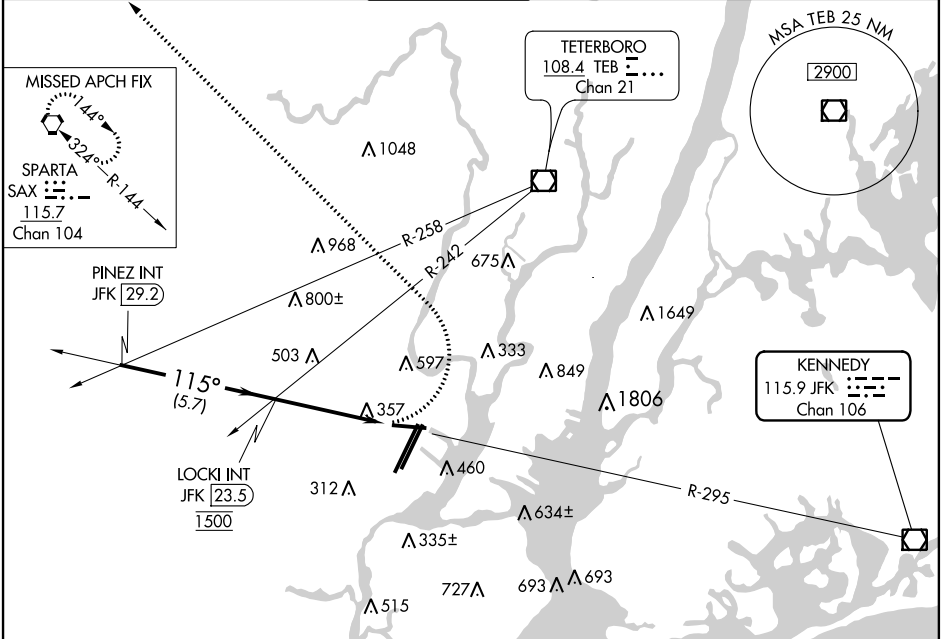
NEWARK LIBERTY INTL (EWR)

RADAR required for procedure entry.

**▼** Rwy 11 helicopter visibility reduction below 1 SM NA.  
**▲** Straight-in Rwy 11 NA at night.

MISSED APPROACH: Climbing left turn to 3000 direct SAX VORTAC and hold.

D-ATIS	NEW YORK APP CON	NEWARK TOWER	GND CON	CLNC DEL	CPDLC
<b>115.7 134.825</b>	<b>128.55 379.9</b>	<b>118.3 257.6</b>	<b>121.8</b>	<b>118.85</b>	



CATEGORY	A	B	C	D
	1000-1¼ 983 (1000-1¼)	1000-1½ 983 (1000-1½)	1000-3	983 (1000-3)
<b>☐</b> CIRCLING	1000-1¼ 983 (1000-1¼)	1000-1½ 983 (1000-1½)	1000-3	983 (1000-3)

Knots	60	90	120	150	180
	Min:Sec	4:24	2:56	2:12	1:46

NE-2, 25 FEB 2021 to 25 MAR 2021

NE-2, 25 FEB 2021 to 25 MAR 2021