

TIKEE THREE ARRIVAL (RNAV)

WASHINGTON, DC

NE-3, 25 FEB 2021 to 25 MAR 2021

ARRIVAL ROUTE DESCRIPTION

BBONE TRANSITION (BBONE.TIKEE3):
KESSEL TRANSITION (ESL.TIKEE3):
SEALZ TRANSITION (SEALZ.TIKEE3):

All aircraft types landing HEF, 2VG2, NYG, RMN, HWY, CJR, EZF: From **TIKEE** on track 090° to **JETIS**, then on heading 090° or as assigned by ATC. Expect RADAR vectors to final approach course.

Props and Turboprop aircraft landing DAA, W00, VKX, ADW, 2W5, DCA, W32: From **TIKEE** on track 122° to **GILFF**, then on track 090° to **HIGPO**, then on heading 090° or as assigned by ATC. Expect RADAR vectors to final approach course.

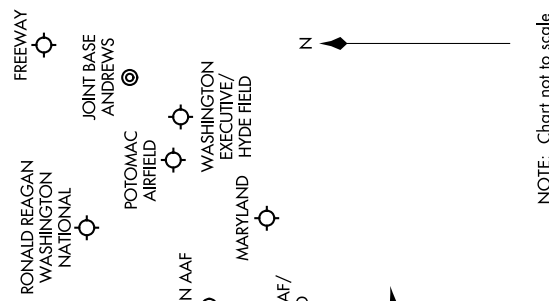
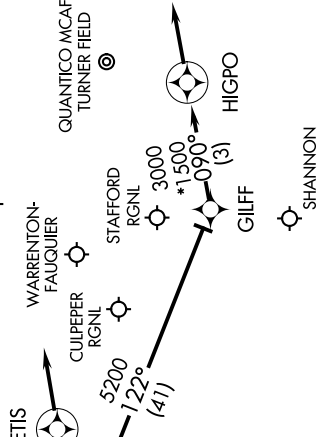
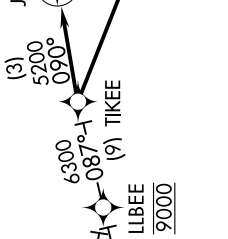
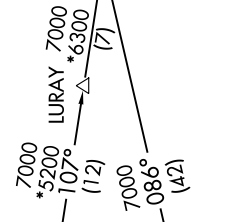
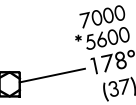
POTOMAC APP CON
 120.45 306.925
 DCA D-ATIS
 132.65
 KADW D-ATIS
 113.1 251.05
 KDAW ATIS
 128.175

NOTE: RADAR required.

NOTE: RNAV 1.
 NOTE: DME/DME/IRU or GPS required.
 NOTE: Procedure available to all type aircraft landing the following airports: 2VG2, CJR, HWY, HEF, RMN, EZF, NYG.

NOTE: Props or Turboprop aircraft only landing the following airports: DAA, 2W5, VKX, W32, W00, DCA, ADW.

KESSEL
 ESL
 FL190



NOTE: Chart not to scale

TIKEE THREE ARRIVAL (RNAV)

WASHINGTON, DC

NE-3, 25 FEB 2021 to 25 MAR 2021