

WAAS CH 56433 W27A	APP CRS 273°	Rwy Idg TDZE Apt Elev	4500 858 858
--	------------------------	-----------------------------	---

RNAV (GPS) RWY 27

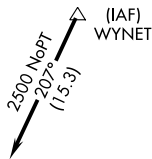
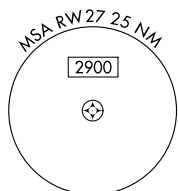
KEWANEE MUNI (EZI)

Baro-VNAV NA. DME/DME RNP-0.3 NA. Use Galesburg altimeter setting; when not received, use Moline altimeter setting and increase all DA 29 feet and all MDA 40 feet, increase LPV all Cats and LNAV Cat C visibility 1/8 mile, and Circling Cat C visibility 1/4 mile.

MISSED APPROACH: Climb to 2400 direct WIKOK and hold.

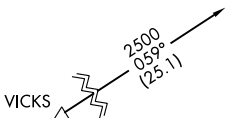
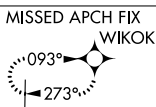
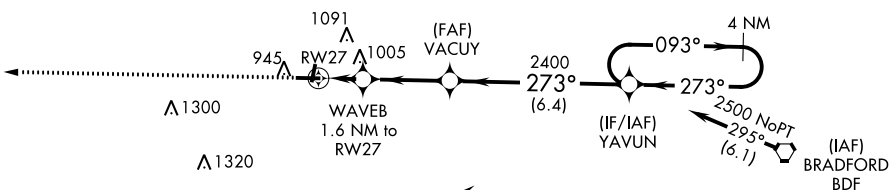
QUAD CITY APP CON *
133.275 257.8

UNICOM
122.8 (CTAF) 0



Procedure NA for arrivals at WYNET on V8-38 eastbound.

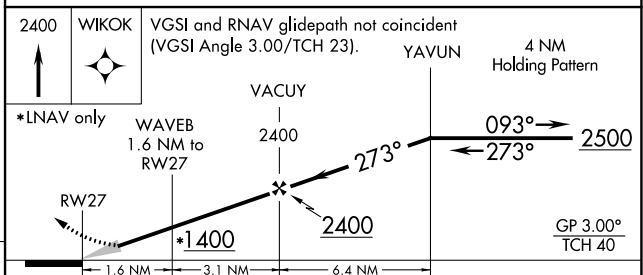
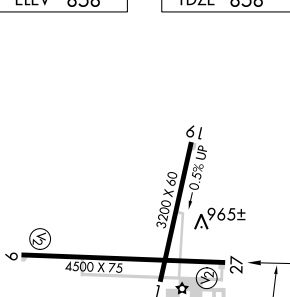
A1390



Procedure NA for arrivals at VICKS on V434 northwest bound.

Procedure VORTA for arrivals at BDF NORTAC on V156 eastbound.

ELEV 858 TDZE 858



CATEGORY	A	B	C	D
LPV DA	1183-1/8	325 (400-1/8)		NA
LNAV/VNAV DA	1212-1/4	354 (400-1/4)		NA
LNAV MDA	1340-1	482 (500-1)	1340-1 3/8 482 (500-1 3/8)	NA
CIRCLING	1340-1 482 (500-1)	1520-1 662 (700-1)	1520-1 3/4 662 (700-1 3/4)	NA

EC-3, 25 FEB 2021 to 25 MAR 2021

EC-3, 25 FEB 2021 to 25 MAR 2021