

WAAS CH 77729 W30A	APP CRS 295°	Rwy Idg TDZE Apt Elev	3899 810 813
--	------------------------	-----------------------------	---

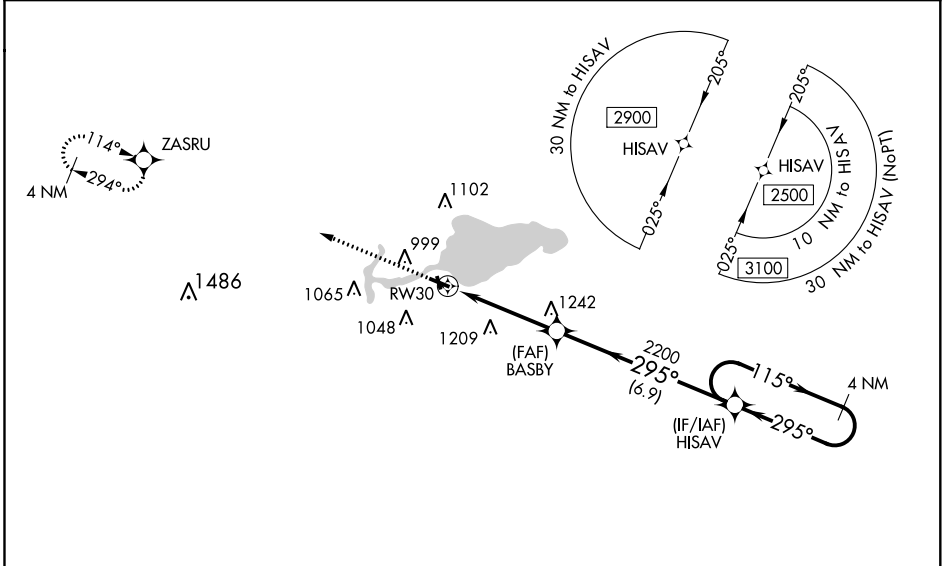
RNAV (GPS) RWY 30

SHAWANO MUNI (E/ZS)

⚠ Baro-VNAV and VDP NA when using Green Bay altimeter setting. Helicopter visibility reduction below 3/4 SM NA. For uncompensated Baro-VNAV systems, LNAV/VNAV NA below -16°C (4°F) or above 39°C (102°F). DME/DME RNP-0.3 NA. Circling to Rwy 12 and 35 NA at night. When local altimeter setting not received, use Green Bay altimeter setting and increase all DA 77 feet and all MDA 80 feet and increase LPV all Cats, LNAV/VNAV all Cats, LNAV Cat B, and Circling Cats B and D visibility 1/4 mile, increase LNAV Cat C and D and Circling Cat C visibility 1/2 mile.

MISSED APPROACH:
Climb to 2700 direct ZASRU and hold.

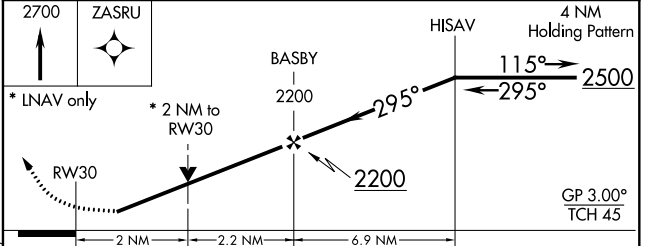
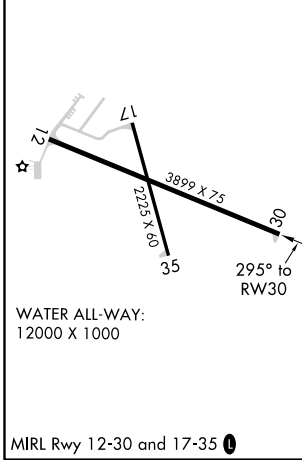
AWOS-3 118.65	GREEN BAY APP CON * 119.4 338.2	UNICOM 122.8 (CTAF)
-------------------------	---	-------------------------------



EC-3, 25 FEB 2021 to 25 MAR 2021

EC-3, 25 FEB 2021 to 25 MAR 2021

ELEV 813	TDZE 810
----------	----------



CATEGORY	A	B	C	D
LPV DA		1097-1	287 (300-1)	
LNAV/VNAV DA		1456-2 1/4	646 (700-2 1/4)	
LNAV MDA	1500-1	690 (700-1)	1500-2	690 (700-2)
CIRCLING	1500-1	687 (700-1)	1500-2 687 (700-2)	1560-2 1/2 747 (800-2 1/2)