

WAAS CH 82017 W17A	APP CRS 172°	Rwy Idg 4000 TDZE 1040 Apt Elev 1040
--	------------------------	---

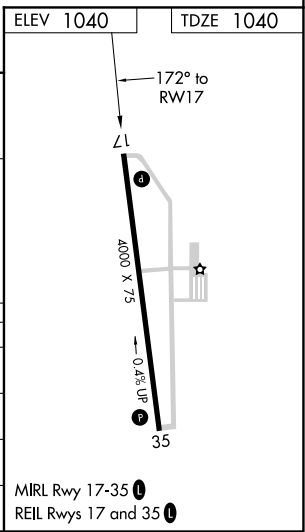
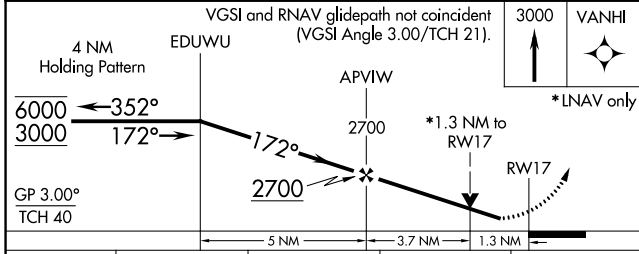
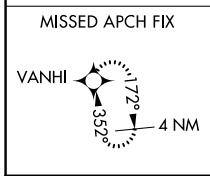
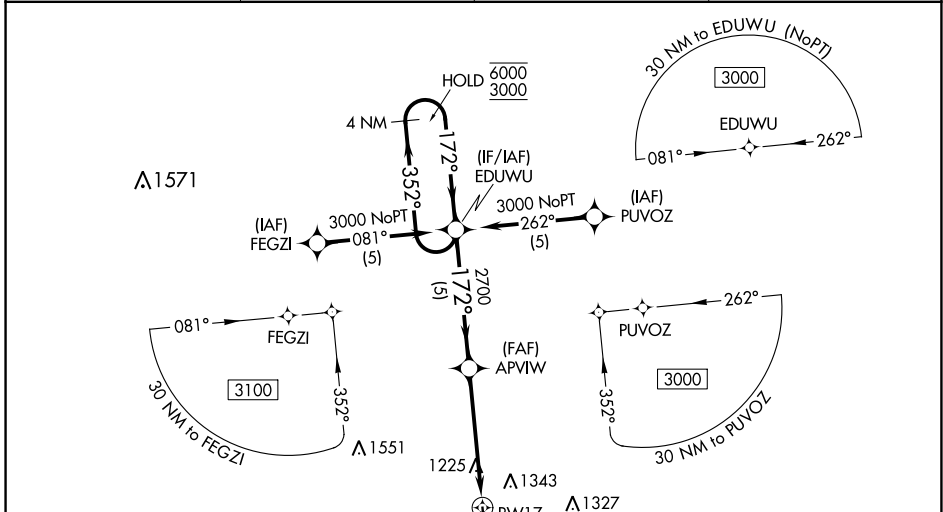
RNAV (GPS) RWY 17

CAMERON MEMORIAL (EZZ)

RNP APCH.
 ▼ Rwy 17 helicopter visibility reduction below $\frac{3}{4}$ SM NA.
 For uncompensated Baro-VNAV systems, LNAV/VNAV NA below -17°C or above 54°C.

MISSED APPROACH: Climb to 3000 direct VANHI and hold.

AWOS-3 121.05	KANSAS CITY APP CON 118.4 307.35	CLNC DEL 121.6	UNICOM 122.8 (CTAF) ①
-------------------------	--	--------------------------	---------------------------------



CATEGORY	A	B	C	D
LPV DA	1290- $\frac{3}{4}$	250 (300- $\frac{3}{4}$)		NA
LNAV/VNAV DA	1518-1 $\frac{3}{8}$	478 (500-1 $\frac{3}{8}$)		NA
LNAV MDA	1480-1	440 (500-1)		NA
CIRCLING	1660-1	620 (700-1)		NA

NC-3, 25 FEB 2021 to 25 MAR 2021

NC-3, 25 FEB 2021 to 25 MAR 2021