

WAAS CH 81932 W12A	APP CRS 125°	Rwy Idg TDZE Apt Elev	4257 1060 1060
--	------------------------	-----------------------------	---

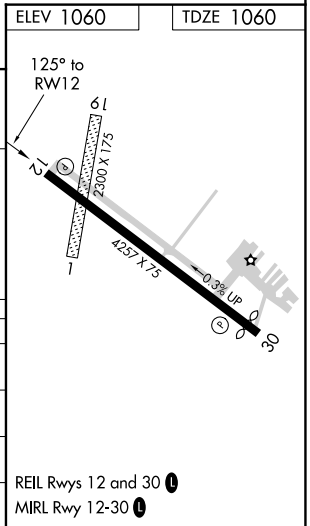
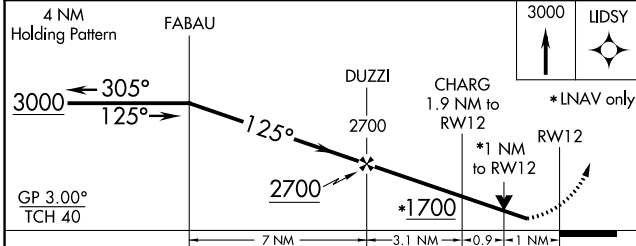
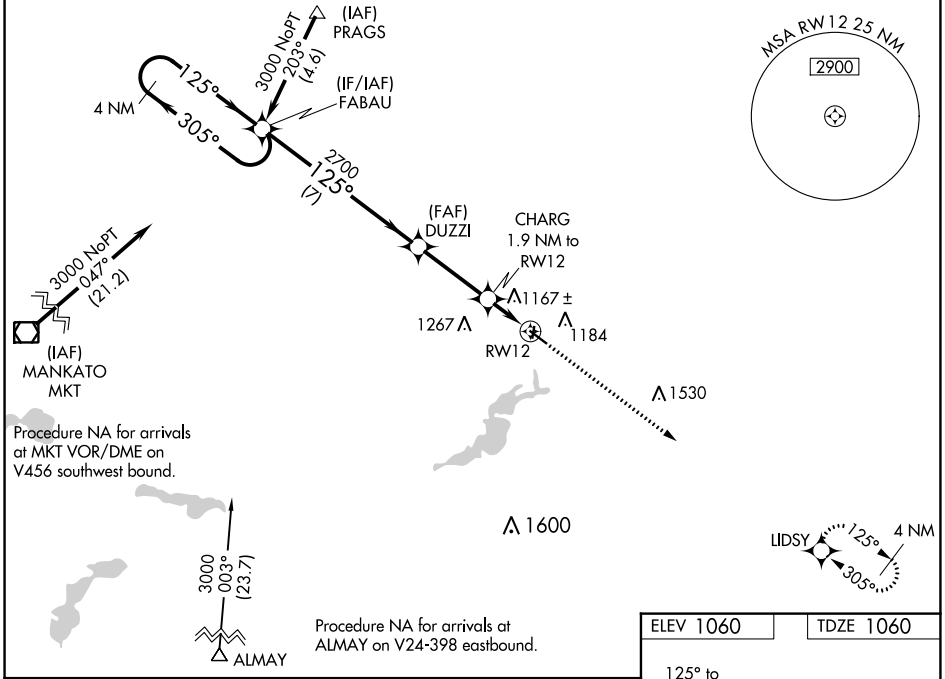
RNAV (GPS) RWY 12

FARIBAULT MUNI-LIZ WALL STROHFUS FIELD (F'BL)

▼ Baro-VNAV and VDP NA when using Owatonna altimeter setting. For uncompensated Baro-VNAV systems, LNAV/VNAV NA below -17°C (2°F) or above 54°C (130°F). DME/DME RNP-0.3 NA. When local altimeter setting not received, use Owatonna altimeter setting and increase all DA 41 feet and all MDA 60 feet; increase LNAV Cat C visibility ½ mile. Rwy 12 helicopter visibility reduction below ¾ SM NA. Circling to Rwy 1, 19 NA.

MISSED APPROACH:
Climb to 3000 direct
LIDSY and hold.

AWOS-3 111.2	MINNEAPOLIS APP CON 134.7 284.7	GCO 121.725	UNICOM 122.8 (CTAF) 0
------------------------	---	-----------------------	---------------------------------



CATEGORY	A	B	C	D
LPV DA		1310-1 250 (300-1)		NA
LNAV/VNAV DA		1331-1 271 (300-1)		NA
LNAV MDA		1420-1 360 (400-1)		NA
CIRCLING	1520-1 460 (500-1)		1520-1½ 460 (500-1½)	NA

NC-1, 25 FEB 2021 to 25 MAR 2021

NC-1, 25 FEB 2021 to 25 MAR 2021