

WAAS CH <b>78234</b> <b>W22A</b>	APP CRS <b>224°</b>	Rwy Idg TDZE Apt Elev	<b>6404</b> <b>7023</b> <b>7038</b>
--	------------------------	-----------------------------	---

# RNAV (GPS) RWY 22

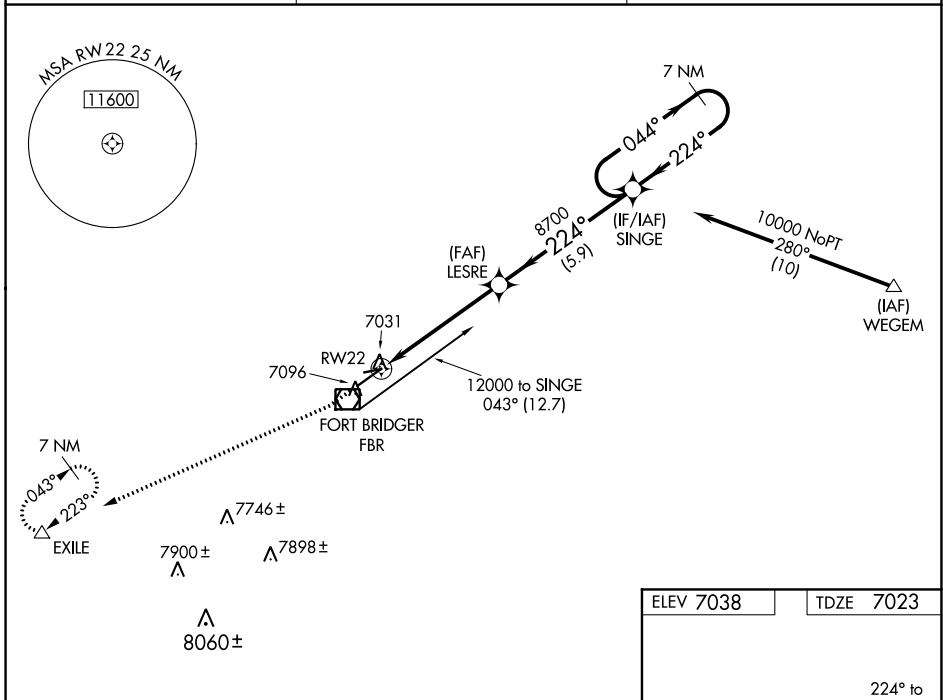
FORT BRIDGER (FBR)

RNP APCH.

**⚠** Circling NA to Rwy 7 and 25. When local altimeter setting not received, use Evanston altimeter setting and increase all MDAs 100 feet, increase LNAV Cats C and D visibility  $\frac{1}{8}$  SM, Circling Cat C visibility  $\frac{1}{4}$  SM and Cat D visibility  $\frac{1}{2}$  SM.

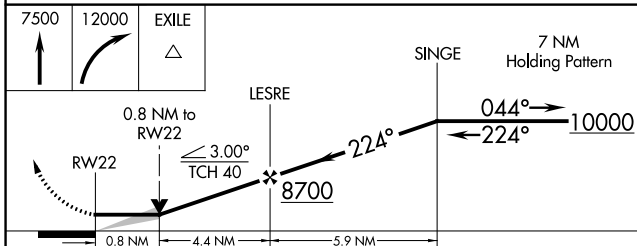
MISSED APPROACH: Climb to 7500, then climbing right turn to 12000 direct EXILE and hold, continue climb-in-hold to 12000.

AWOS-3PT <b>118.8</b>	SALT LAKE CENTER <b>124.35 353.5</b>	UNICOM <b>122.8 (CTAF) 0</b>
--------------------------	---	---------------------------------

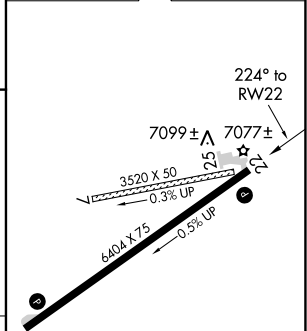


NW-1, 25 FEB 2021 to 25 MAR 2021

NW-1, 25 FEB 2021 to 25 MAR 2021



ELEV 7038	TDZE 7023
-----------	-----------



CATEGORY	A	B	C	D
LP MDA	7300-1	277 (300-1)		
LNAV MDA	7340-1	317 (400-1)		
<b>C</b> CIRCLING	7400-1 362 (400-1)	7500-1 462 (500-1)	7660-1 $\frac{3}{4}$ 622 (700- $\frac{3}{4}$ )	7680-2 642 (700-2)

REIL Rwy 4 and 22 0  
MIRL Rwy 4-22 0