

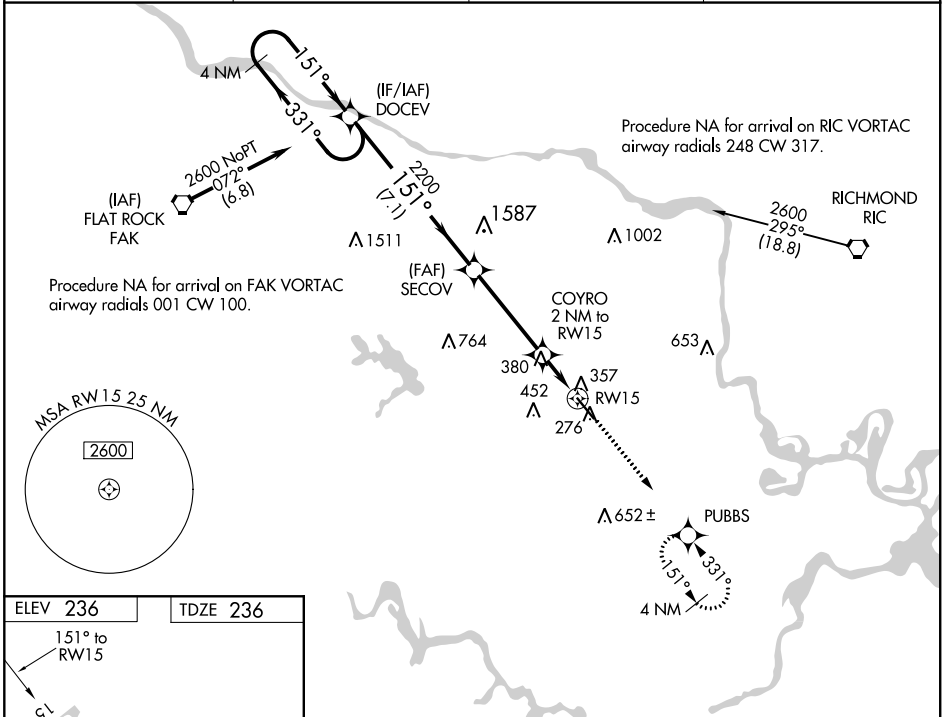
WAAS CH 63216	APP CRS 151°	Rwy Idg 5500
W15A		TDZE 236
		Apt Elev 236

RNAV (GPS) RWY 15

RICHMOND EXECUTIVE-CHESTERFIELD COUNTY (F'CI)

RNP APCH.	<p>For uncompensated Baro-VNAV systems, LNAV/VNAV NA below -15°C or above 54°C. When local altimeter setting not received, use Richmond Intl altimeter setting and increase all DA 36 feet, and all MDA 40 feet, increase LNAV/VNAV all Cats visibility 1/4 mile. VDP and Baro-VNAV NA when using Richmond Intl altimeter setting.</p>	<p>MISSED APPROACH: Climb to 2000 direct PUBBS and hold.</p>
-----------	--	--

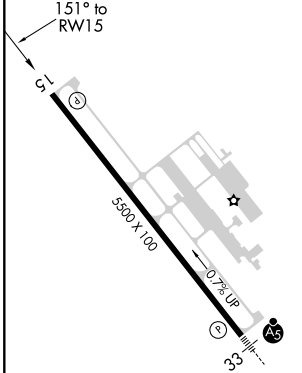
AWOS-3PT 128.625	POTOMAC APP CON 126.75 307.2	CLNC DEL 124.6	UNICOM 123.05 (CTAF)
----------------------------	--	--------------------------	--------------------------------



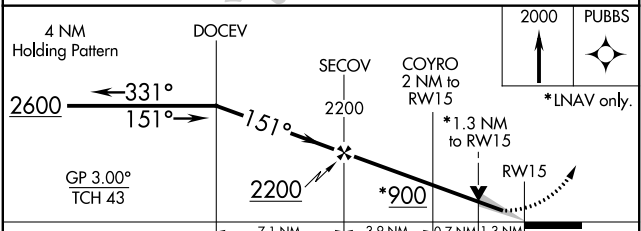
NE-3, 25 FEB 2021 to 25 MAR 2021

NE-3, 25 FEB 2021 to 25 MAR 2021

ELEV 236	TDZE 236
-----------------	-----------------



REIL Rwy 15 **1**
HIRL Rwy 15-33 **1**



CATEGORY	A	B	C	D
LPV DA	486-1 250 (300-1)			
LNAV/VNAV DA	692-1 1/2 456 (500-1 1/2)			
LNAV MDA	680-1 444 (500-1)	680-1 3/8 444 (500-1 3/8)	680-1 1/2 444 (500-1 1/2)	680-1 1/2 444 (500-1 1/2)

RNAV (GPS) RWY 15