

WAAS CH 56221 W33A	APP CRS 331°	Rwy Idg TDZE Apt Elev	5500 217 236
--	------------------------	-----------------------------	---

RNAV (GPS) RWY 33

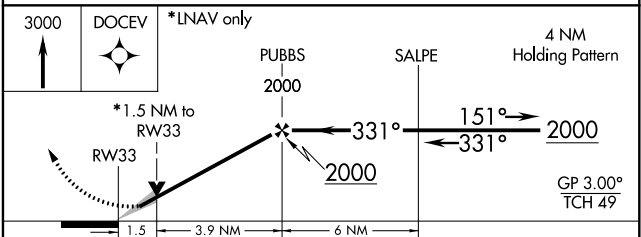
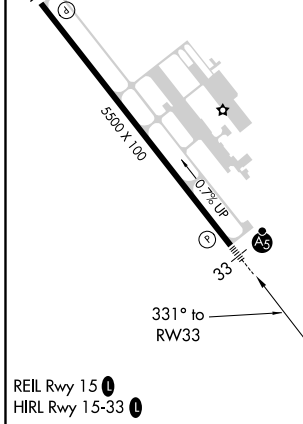
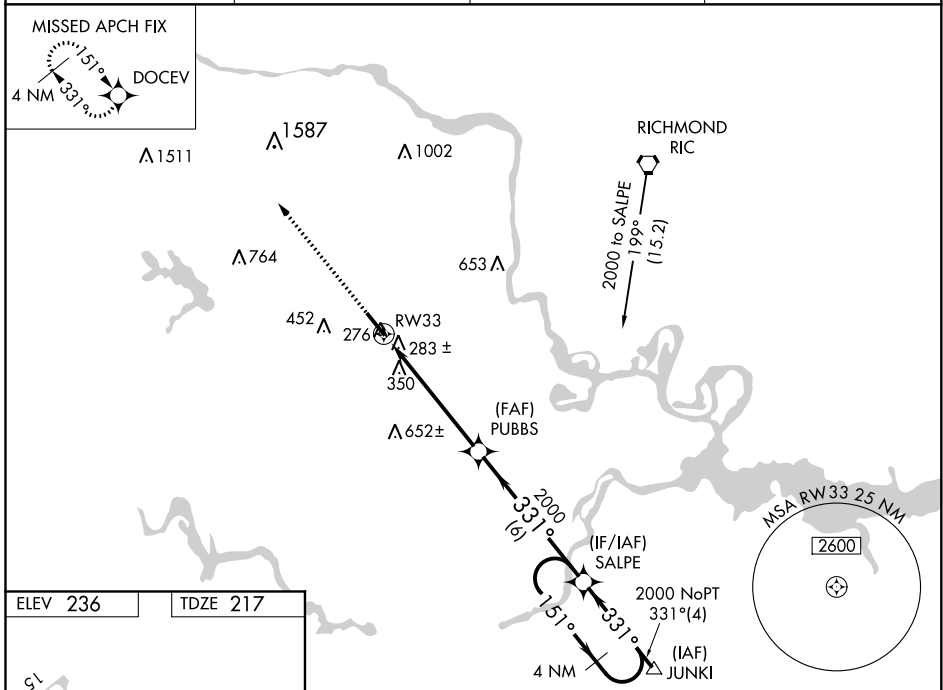
RICHMOND EXECUTIVE-CHESTERFIELD COUNTY (F'CI)

▼ For uncompensated Baro-VNAV systems, LNAV/VNAV NA below -15°C (5°F) or above 54°C (130°F). When local altimeter setting not received, use Richmond Intl altimeter setting and increase all DA 36 feet and all MDA 40 feet; increase LPV and LNAV/VNAV all Cats and LNAV Cats C/D and Circling Cat C visibility 1/8 mile. DME/DME RNP-0.3 NA. For inop MALSR, increase LPV all Cats visibility to 1 mile and LNAV Cat C/D to 1 3/8 mile. For inop MALSR when using Richmond Intl altimeter setting, increase LPV all Cats visibility to 1 1/8 mile. Baro-VNAV and VDP NA when using Richmond Intl altimeter setting.

⚠ NA

MALSR
MISSED APPROACH:
Climb to 3000 direct
DOCEV and hold.

AWOS-3PT 128.625	POTOMAC APP CON 126.75 307.2	CLNC DEL 124.6	UNICOM 123.05 (CTAF)
----------------------------	--	--------------------------	--------------------------------



CATEGORY	A	B	C	D
LPV DA	510-1/2 293 (300-1/2)			
LNAV/VNAV DA	598-7/8 381 (400-7/8)			
LNAV MDA	720-1/2	503 (500-1/2)	720-1	503 (500-1)
CIRCLING	720-1	484 (500-1)	760-1/2 524 (600-1/2)	800-2 564 (600-2)

RNAV (GPS) RWY 33

NE-3, 25 FEB 2021 to 25 MAR 2021

NE-3, 25 FEB 2021 to 25 MAR 2021