

NC-1, 25 FEB 2021 to 25 MAR 2021

NOTE: RADAR required.

TAKEOFF MINIMUMS

Rwys 10L/R, 18, 28L/R, 36: Standard.

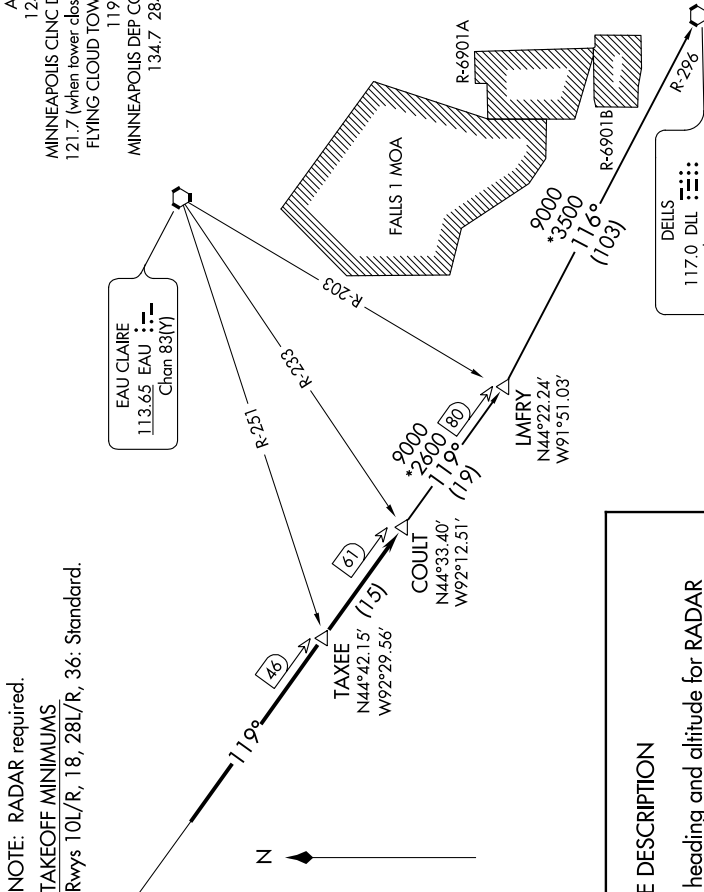
ATIS
124.9
MINNEAPOLIS CLINC DEL
121.7 (when tower closed)
FLYING CLOUD TOWER*
119.15
MINNEAPOLIS DEP CON
134.7 284.7

EAU CLAIRE
113.65 EAU
Chan 83(Y)

GOPHER
117.3 GEP
Chan 120

FLYING CLOUD
117.7 FCM
Chan 124

DELLS
117.0 DLL
Chan 117
N43°33.05'-W89°45.82'
L-28, H-5



DEPARTURE ROUTE DESCRIPTION

TAKEOFF ALL RUNWAYS: Fly assigned heading and altitude for RADAR vectors to intercept GEP R-119 to COULT INT/GEP 61 DME, thence

. . . . on transition or assigned route. Expect clearance to filed altitude/flight level 10 (ten) minutes after departure.

DELLS TRANSITION (COULT7.DLL): From over COULT INT on GEP R-119 to LMFRY INT, then on DLL R-296 to DLL VORTAC.

NOTE: Chart not to scale.

NC-1, 25 FEB 2021 to 25 MAR 2021