

WAAS CH 82635 W36A	APP CRS 003°	Rwy Idg 2690 TDZE 905 Apt Elev 906
--	------------------------	---

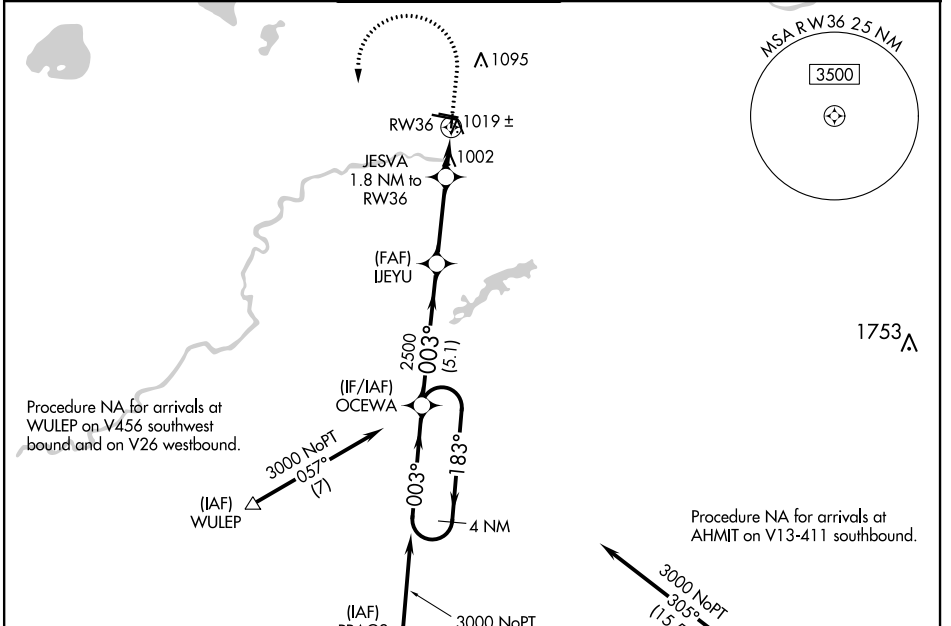
RNAV (GPS) RWY 36

FLYING CLOUD (FCM)

⚠ DME/DME RNP-0.3 NA. Helicopter visibility reduction below 1 SM NA.
⚠ Night Landing: Rwy 18/36 NA. When local altimeter setting not received, use Minneapolis St Paul Intl/Wold-Chamberlain altimeter setting and increase all MDA 40 feet and increase LP and LNAV Cat C visibility 1/8 mile.

MISSED APPROACH: Climb to 2000 then climbing left turn to 3000 direct OCEWA and hold.

ATIS 124.9	MINNEAPOLIS APP CON 134.7 284.7	FLYING CLOUD TOWER * 119.15 (CTAF) 0	GND CON 121.7	CLNC DEL 121.7 (When twr closed)	UNICOM 122.95
----------------------	---	--	-------------------------	---	-------------------------



ELEV 906 TDZE 905

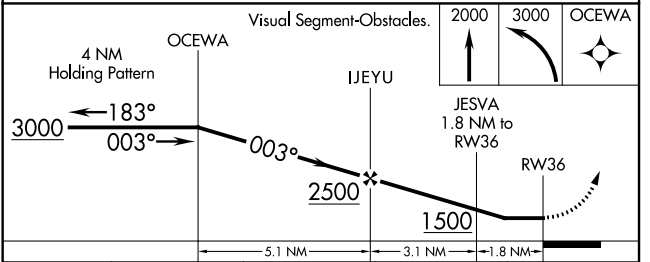
HIRL Rwy 10R-28L
 REIL Rwy 10L, 28R
 REIL Rwy 18, 28L, and 36
 MIRL Rwy 10L-28R and 18-36

TWR 988±
 TW 939
 943
 939
 928
 918
 908
 898
 888
 878
 868
 858
 848
 838
 828
 818
 808
 798
 788
 778
 768
 758
 748
 738
 728
 718
 708
 698
 688
 678
 668
 658
 648
 638
 628
 618
 608
 598
 588
 578
 568
 558
 548
 538
 528
 518
 508
 498
 488
 478
 468
 458
 448
 438
 428
 418
 408
 398
 388
 378
 368
 358
 348
 338
 328
 318
 308
 298
 288
 278
 268
 258
 248
 238
 228
 218
 208
 198
 188
 178
 168
 158
 148
 138
 128
 118
 108
 98
 88
 78
 68
 58
 48
 38
 28
 18
 8

Procedure NA for arrivals at WULEP on V456 southwest bound and on V26 westbound.

Procedure NA for arrivals at AHMIT on V13-411 southbound.

Procedure NA for arrivals at PRAGS on V505 southbound.



CATEGORY	A	B	C	D
LP MDA		1260-1	355 (400-1)	NA
LNAV MDA		1280-1	375 (400-1)	NA
C CIRCLING	1320-1 414 (500-1)	1440-1 534 (600-1)	1440-1½ 534 (600-1½)	NA

NC-1, 25 FEB 2021 to 25 MAR 2021

NC-1, 25 FEB 2021 to 25 MAR 2021