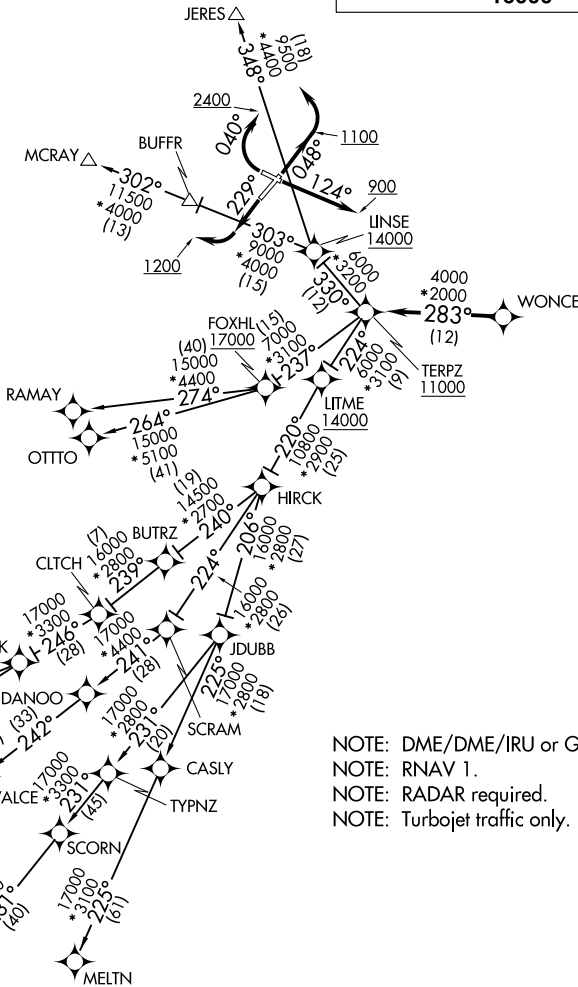


# TERPZ SEVEN DEPARTURE (RNAV)

FREDERICK, MARYLAND

**TOP ALTITUDE:**  
**RAMAY, OTTTO, MAULS, FLASK,**  
**RRSIN, GLANC, MELTN**  
**TRANSITIONS: 17000**  
**JERES, MCRAY TRANSITIONS:**  
**16000**

ATIS  
 124.875  
 CLNC DEL  
 121.975  
 GND CON  
 121.975  
 121.975  
 FREDERICK TOWER\*  
 132.4 (CTAF)  
 UNICOM  
 122.95  
 POTOMAC DEP CON  
 125.525 291.625



NOTE: DME/DME/IRU or GPS required.  
 NOTE: RNAV 1.  
 NOTE: RADAR required.  
 NOTE: Turbojet traffic only.

**TAKEOFF MINIMUMS:**

- Rwy 23: Standard.
- Rwy 5: Standard with minimum climb of 260' per NM to 1100.
- Rwy 12: 500-2¾ or Standard with minimum climb of 395' per NM to 1000.
- Rwy 30: Standard with minimum climb of 285' per NM to 900.

NOTE: Chart not to scale.

NE-3, 25 FEB 2021 to 25 MAR 2021

NE-3, 25 FEB 2021 to 25 MAR 2021

# TERPZ SEVEN DEPARTURE (RNAV)

(TERPZ7.TERPZ) 26MAR20

FREDERICK, MARYLAND  
FREDERICK MUNI (F'DK)