

WAAS CH <b>70405</b> <b>W18A</b>	APP CRS <b>185°</b>	Rwy Idg TDZE Apt Elev	<b>6499</b> <b>813</b> <b>813</b>
--	------------------------	-----------------------------	---

# RNAV (GPS) RWY 18

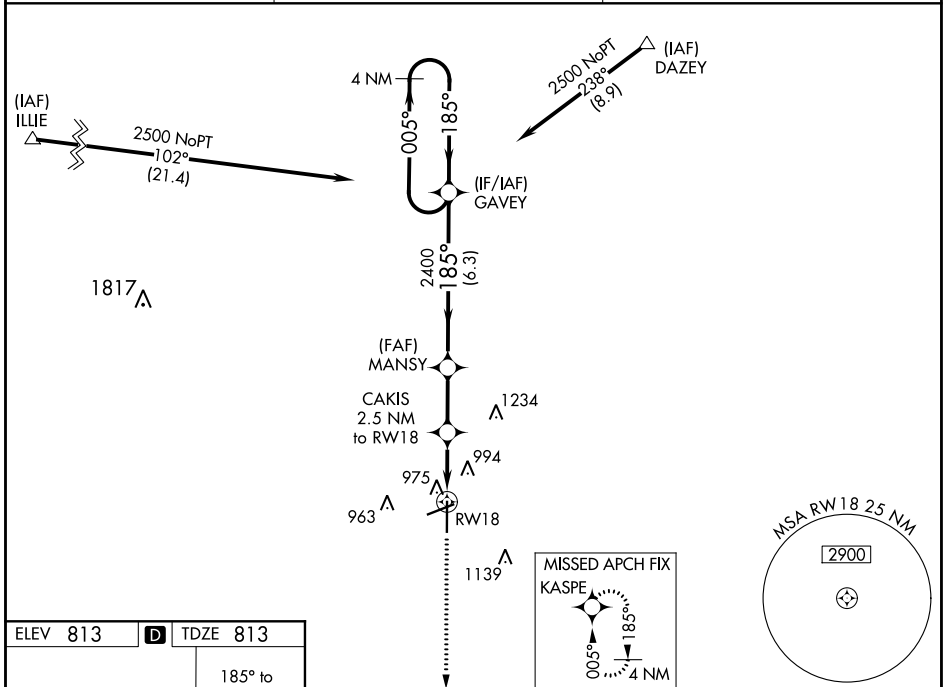
FINDLAY (F'DY)

RNP APCH

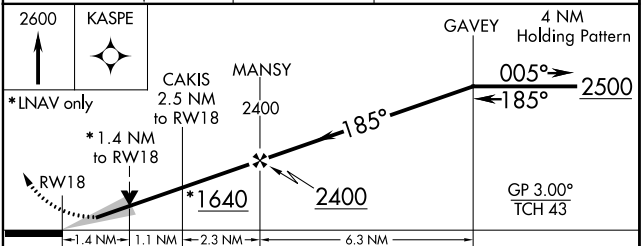
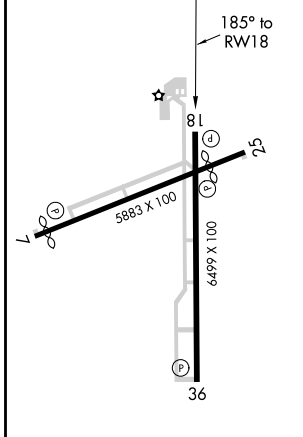
▼ For uncompensated Baro-VNAV systems, LNAV/VNAV NA below -16°C or above 47°C. Baro-VNAV and VDP NA when using Lima Allen County altimeter setting. When local altimeter setting not received, use Lima Allen County altimeter setting; increase all DAs/MDAs 80 feet; increase LNAV Cat C/D and Circling Cat C/D visibility ¼ SM.

MISSED APPROACH: Climb to 2600 direct KASPE and hold.

ASOS <b>132.85</b>	TOLEDO APP CON <b>120.8 317.55</b>	UNICOM <b>122.725 (CTAF) 0</b>
-----------------------	---------------------------------------	-----------------------------------



ELEV 813	<b>D</b>	TDZE 813
----------	----------	----------



CATEGORY	A	B	C	D
LPV DA	1063-1 250 (300-1)			
LNAV/VNAV DA	1320-1¾ 507 (600-1¾)			
LNAV MDA	1300-1	487 (500-1)	1300-1¾ 487 (500-1¾)	1300-1½ 487 (500-1½)
CIRCLING	1440-1	627 (700-1)	1440-1¾ 627 (700-1¾)	1440-2 627 (700-2)