

| | | | |
|--|------------------------|-----------------------------|---|
| WAAS CH 56405 W25A | APP CRS 254° | Rwy Idg TDZE Apt Elev | 4558 812 813 |
|--|------------------------|-----------------------------|---|

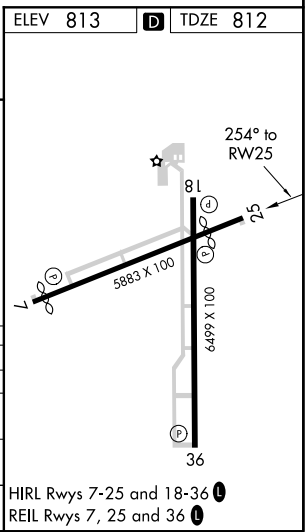
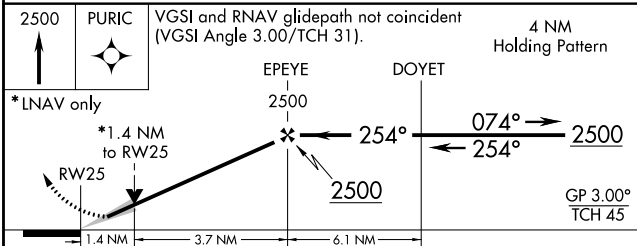
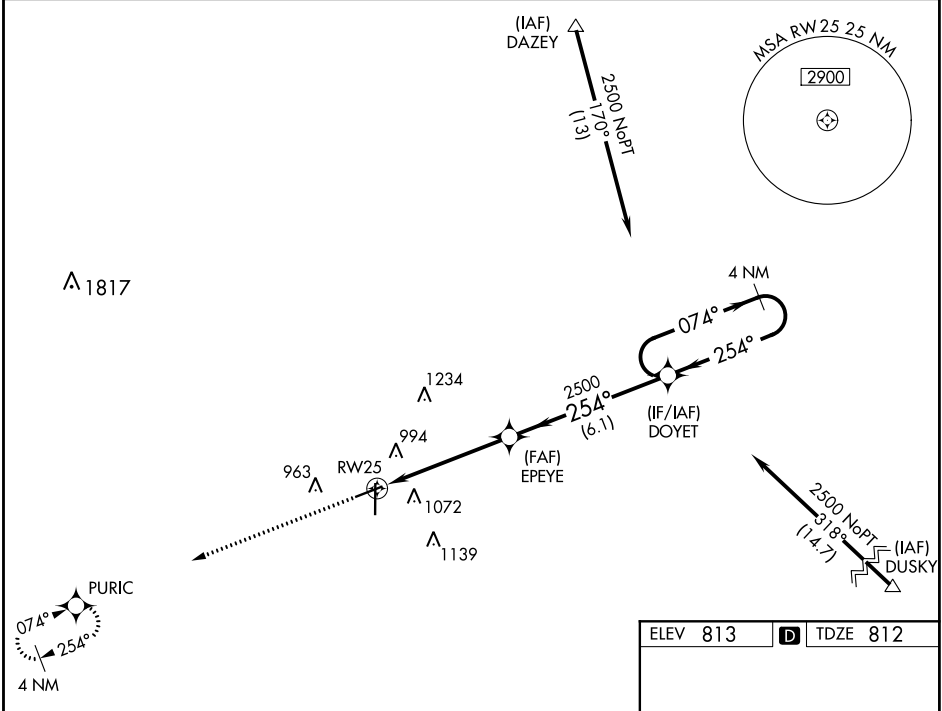
RNAV (GPS) RWY 25

FINDLAY (F'DY)

RNP APCH
 ▼ For uncompensated Baro-VNAV systems, LNAV/VNAV NA below -16°C or above 47°C. Baro-VNAV and VDP NA when using Lima Allen County altimeter setting. When local altimeter setting not received, use Lima Allen County altimeter setting; increase all DAs/MDAs 80 feet; increase LPV visibility ½ SM all Cats; increase LNAV Cat C/D and Circling Cat C/D visibility ¼ SM.

MISSED APPROACH:
 Climb to 2500 direct PURIC and hold.

| | | |
|-----------------------|---------------------------------------|---------------------------------|
| ASOS 132.85 | TOLEDO APP CON 120.8 317.55 | UNICOM 122.725 (CTAF) |
|-----------------------|---------------------------------------|---------------------------------|



| CATEGORY | A | B | C | D |
|--------------|--------|-------------|-------------------------|-------------------------|
| LPV DA | 1116-1 | | 304 (400-1) | |
| LNAV/VNAV DA | 1411-2 | | 599 (600-2) | |
| LNAV MDA | 1280-1 | 468 (500-1) | 1280-1½ 468 (500-1½) | 1280-1½ 468 (500-1½) |
| CIRCLING | 1440-1 | 627 (700-1) | 1440-1¾ 627 (700-1¾) | 1440-2 627 (700-2) |

RNAV (GPS) RWY 25

FINDLAY (F'DY)

EC-2, 25 FEB 2021 to 25 MAR 2021

EC-2, 25 FEB 2021 to 25 MAR 2021