

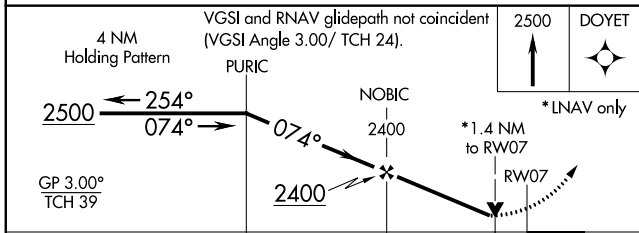
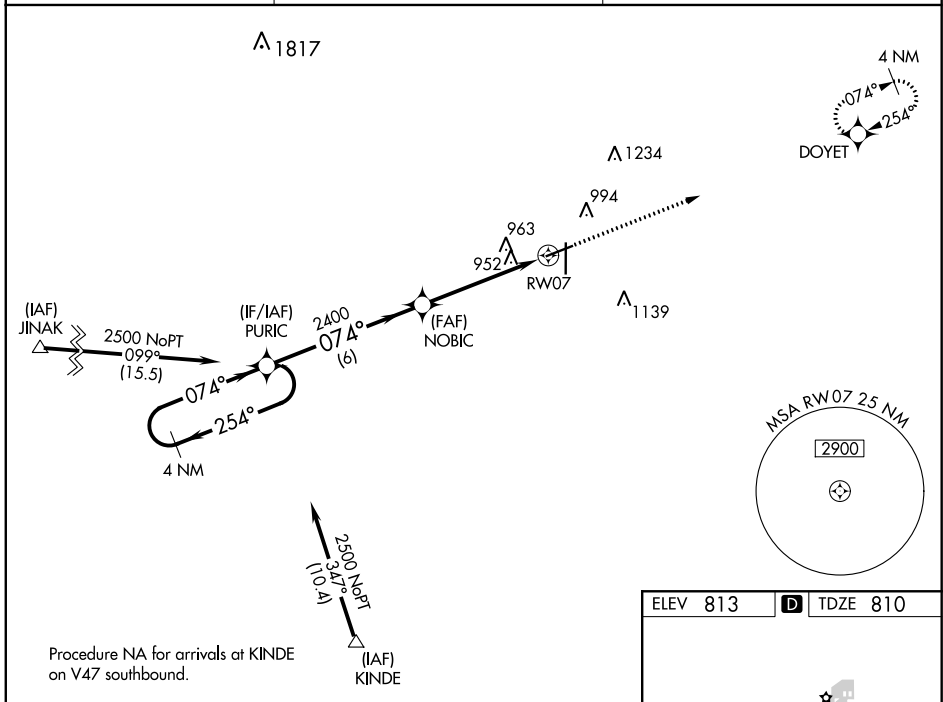
APP CRS	Rwy Idg	4558
074°	TDZE	810
	Apt Elev	813

RNAV (GPS) RWY 7

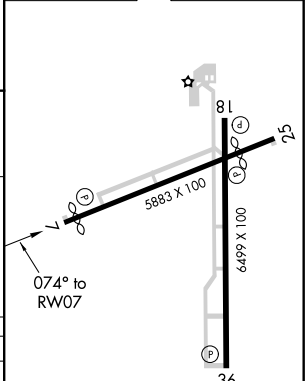
FINDLAY (FDY)

RNP APCH	<p>▼ For uncompensated Baro-VNAV systems, LNAV/VNAV NA below -1.6°C or above 47°C. Baro-VNAV and VDP NA when using Lima Allen County altimeter setting. Rwy 7 helicopter visibility reduction below ¼ SM NA. When local altimeter setting not received, use Lima Allen County altimeter setting: increase DA to 1377 feet; increase all MDAs 80 feet; increase LNAV Cat C visibility ⅛ SM and Circling Cat C/D visibility ¼ SM.</p>	MISSED APPROACH: Climb to 2500 direct DOYET and hold.
----------	---	--

ASOS 132.85	TOLEDO APP CON 120.8 317.55	UNICOM 122.725 (CTAF) 0
-----------------------	---------------------------------------	-----------------------------------



ELEV 813	D TDZE 810
----------	-------------------



CATEGORY	A	B	C	D
LNAV/VNAV DA	1297-1¾ 487 (500-1¾)			
LNAV MDA	1260-1 450 (500-1)	1260-1⅛ 450 (500-1⅛)	1260-1½ 450 (500-1½)	1260-1½ 450 (500-1½)
CIRCLING	1440-1 627 (700-1)	1440-1¾ 627 (700-1¾)	1440-2 627 (700-2)	1440-2 627 (700-2)

HIRL Rwy 7-25 and 18-36 0
REIL Rwy 7, 25 and 36 0

EC-2, 25 FEB 2021 to 25 MAR 2021

EC-2, 25 FEB 2021 to 25 MAR 2021