

LOC/DME I-PJE 108.3 Chan 20	APP CRS 234°	Rwy Idg 5504
		TDZE 847
		Apt Elev 859

ILS or LOC RWY 24

ALBERTUS (FEP)

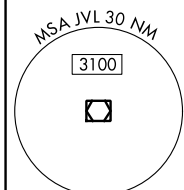
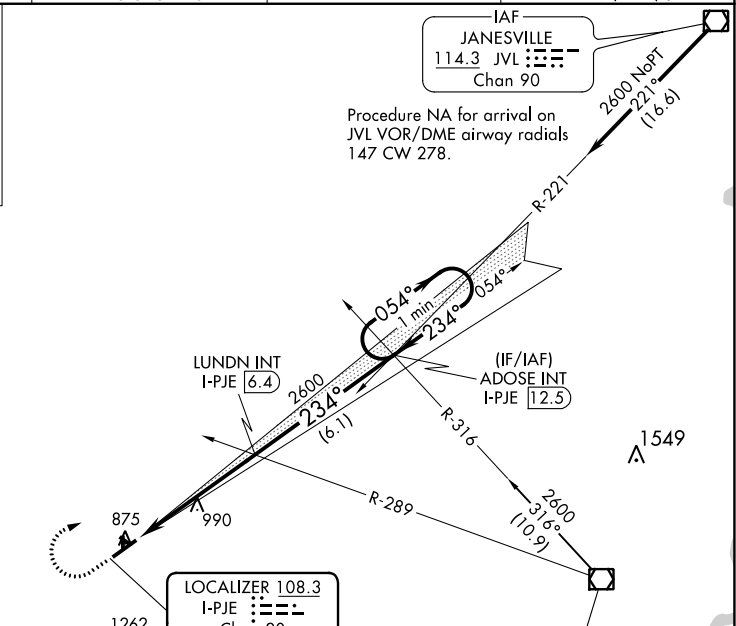
For inoperative MALS R when using Rockford altimeter setting, increase S-ILS 24 all Cats visibility to 7/8 mile. When local altimeter setting not received, use Rockford altimeter setting: increase all DA to 1114 feet; increase all MDA 80 feet and S-LOC 24 Cat C/D visibility 1/8 mile and Circling Cat C 1/4 mile. Circling NA to Rwy 13, 18, 31, 36.

MALS R
MISSED APPROACH: Climb to 1400 then climbing right turn to 2600 via JVL VOR/DME R-221 to ADOSE INT/I-PJE 12.5 DME and hold.

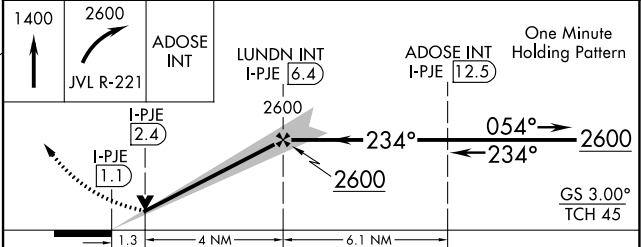
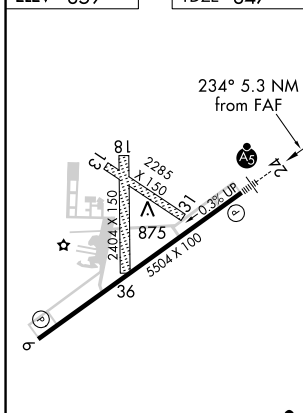
AWOS-3 120.525	ROCKFORD APP CON 126.0 327.0	CINC DEL 121.85	UNICOM 122.8 (CTAF)
--------------------------	--	---------------------------	-------------------------------

ALTERNATE MISSED APCH FIX

ROCKFORD
110.8 RFD
Chan 45



ELEV 859	TDZE 847
----------	----------



CATEGORY	A	B	C	D
S-ILS 24	1047-1/2		200 (200-1/2)	
S-LOC 24	1300-1/2	453 (500-1/2)	1300-7/8	453 (500-7/8)
CIRCLING	1300-1 441 (500-1)	1340-1 481 (500-1)	1380-1 1/2 521 (600-1 1/2)	1440-2 581 (600-2)

FAF to MAP 5.3 NM					
Knots	60	90	120	150	180
Min:Sec	5:18	3:32	2:39	2:07	1:46

EC-3, 25 FEB 2021 to 25 MAR 2021

EC-3, 25 FEB 2021 to 25 MAR 2021