

WAAS CH 78403 W24A	APP CRS 234°	Rwy Idg TDZE Apt Elev	5504 847 859
--	------------------------	-----------------------------	---

RNAV (GPS) RWY 24

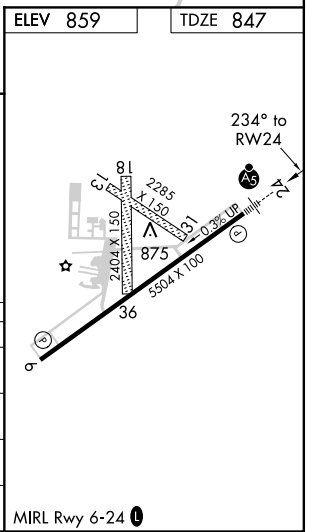
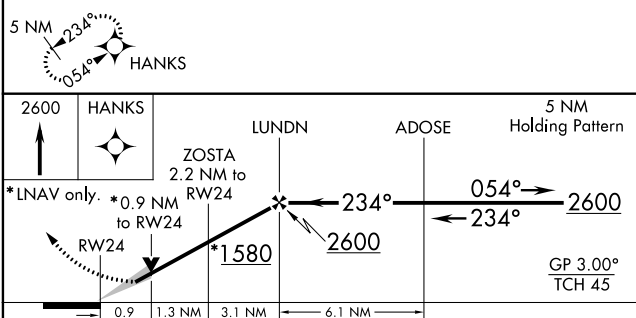
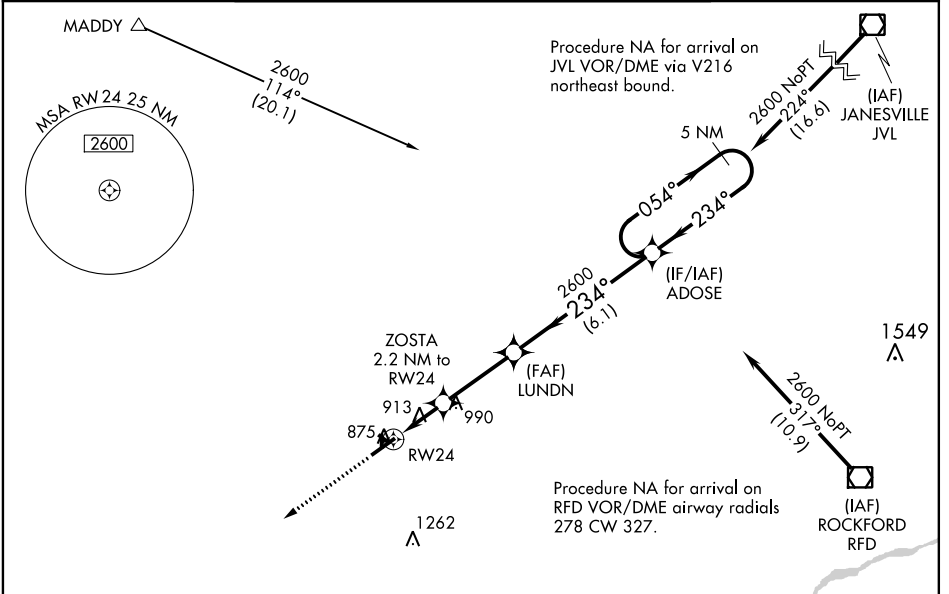
ALBERTUS (FEP)

⚠ When local altimeter setting not received, use Rockford altimeter setting; increase LPV and LNAV/VNAV DA to 1164 feet and all visibilities 1/2 mile; increase all MDA 80 feet and LNAV Cat C/D and Circling Cat C visibility 1/4 mile. DME/DME RNP-0.3 NA. For uncompensated Baro-VNAV systems, LNAV/VNAV NA below -16° C (4° F) or above 47° C (116° F). Baro-VNAV and VDP NA when using Rockford altimeter setting. For inoperative MALSRS, increase LPV and LNAV/VNAV all Cats visibility to 1/2 mile. For inoperative MALSRS when using Rockford altimeter setting, increase LPV all Cats and LNAV C/D visibility to 1 1/2 mile. Circling NA to Rwy's 13, 18, 31, 36.

MALSRS

MISSED APPROACH:
Climb to 2600 direct HANKS and hold.

AWOS-3 120.525	ROCKFORD APP CON 126.0 327.0	CLNC DEL 121.85	UNICOM 122.8 (CTAF)
--------------------------	--	---------------------------	-------------------------------



CATEGORY	A	B	C	D
LPV DA		1097-1/2	250 (300-1/2)	
LNAV/VNAV DA		1097-1/2	250 (300-1/2)	
LNAV MDA		1180-1/2	333 (400-1/2)	
CIRCLING	1300-1 441 (500-1)	1340-1 481 (500-1)	1380-1 1/2 521 (600-1 1/2)	1440-2 581 (600-2)

EC-3, 25 FEB 2021 to 25 MAR 2021

EC-3, 25 FEB 2021 to 25 MAR 2021