

WAAS CH 56404 W06A	APP CRS 054°	Rwy Idg TDZE 859 Apt Elev 859	5504
---------------------------------	------------------------	---	-------------

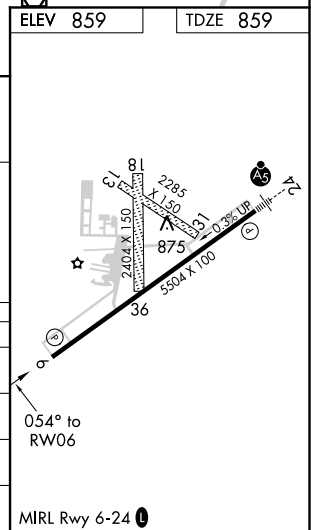
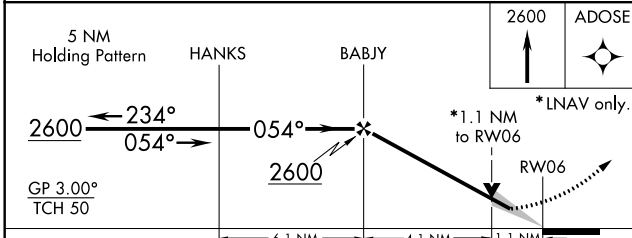
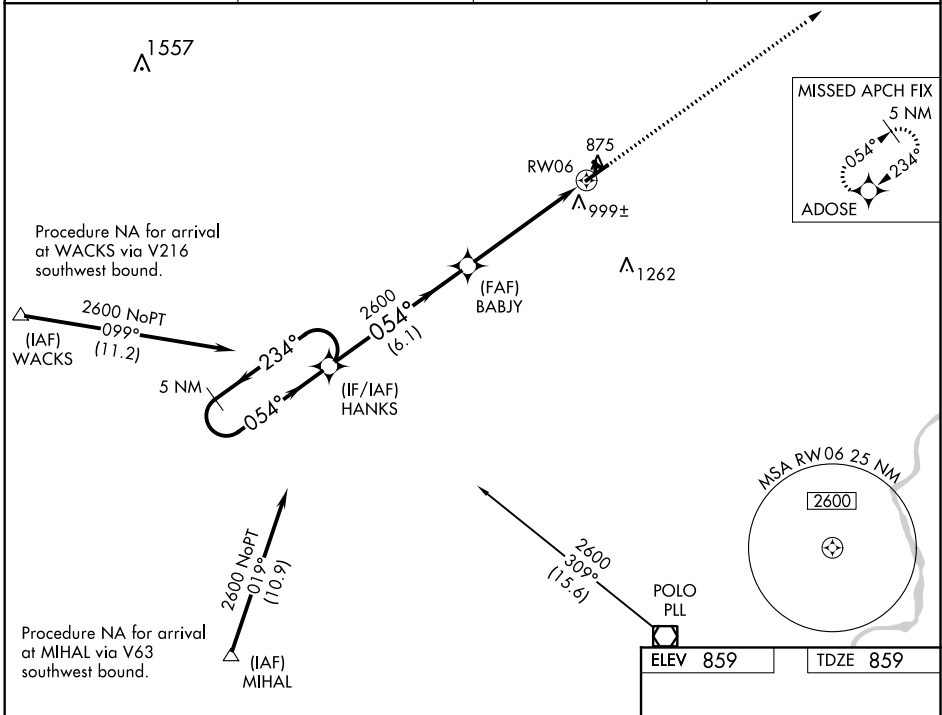
RNAV (GPS) RWY 6

ALBERTUS (FEP)

When local altimeter setting not received, use Rockford altimeter setting: increase LPV DA to 1176 feet, LNAV/VNAV DA to 1438 feet and all visibilities ¼ mile; increase all MDA 80 feet and LNAV Cat C/D and Circling Cat C visibility ¼ mile. DME/DME RNP-0.3 NA. For uncompensated Baro-VNAV systems, LNAV/VNAV NA below -16° C (4° F) or above 47° C (116° F). Baro-VNAV and VDP NA when using Rockford altimeter setting. Circling NA to Rwy's 13, 18, 31, 36.

MISSED APPROACH: Climb to 2600 direct ADOSE and hold.

AWOS-3 120.525	ROCKFORD APP CON 126.0 327.0	CLINC DEL 121.85	UNICOM 122.8 (CTAF) 0
--------------------------	--	----------------------------	---------------------------------



CATEGORY	A	B	C	D
LPV DA	1109-¾		250 (300-¾)	
LNAV/VNAV DA	1371-1¾		512 (600-1¾)	
LNAV MDA	1260-1 401 (500-1)		1260-1½ 401 (500-1½)	
CIRCLING	1300-1 441 (500-1)	1340-1 481 (500-1)	1380-1½ 521 (600-1½)	1440-2 581 (600-2)

EC-3, 25 FEB 2021 to 25 MAR 2021

EC-3, 25 FEB 2021 to 25 MAR 2021