

VOR/DME JVL <b>114.3</b> Chan <b>90</b>	APP CRS <b>225°</b>	Rwy Idg TDZE Apt Elev	<b>5504</b> <b>847</b> <b>859</b>
---	------------------------	-----------------------------	---

# VOR RWY 24

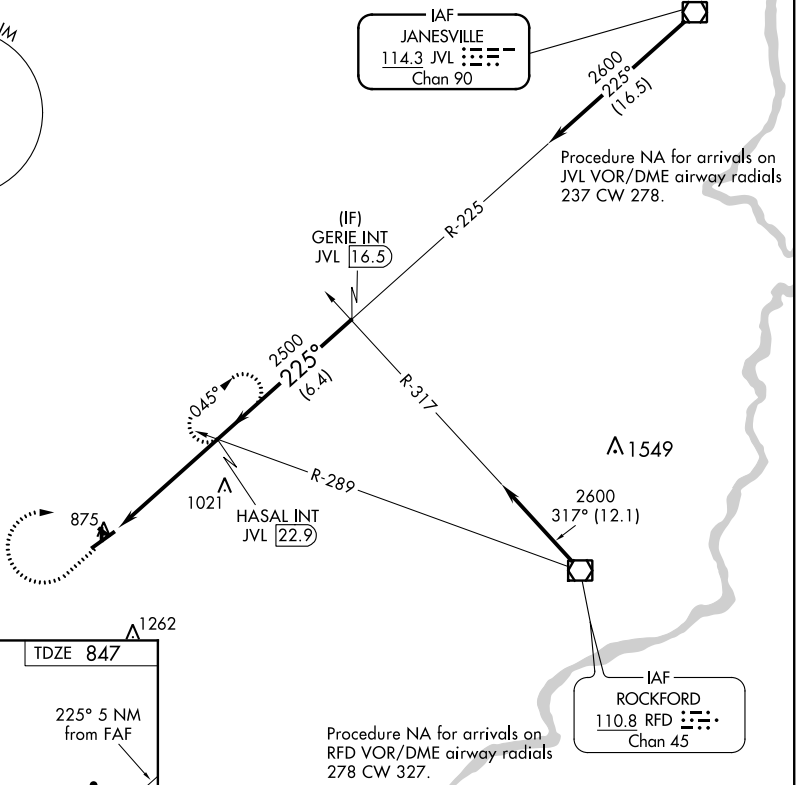
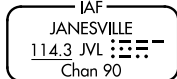
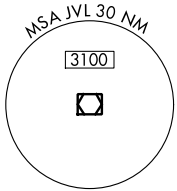
ALBERTUS (F/E/P)

▼ When local altimeter setting not received, use Rockford altimeter setting and increase all MDA 80 feet and Circling Cat C visibility ¼ mile.  
▲ Circling NA to Rwy's 13,18,31,36. Inoperative table does not apply.

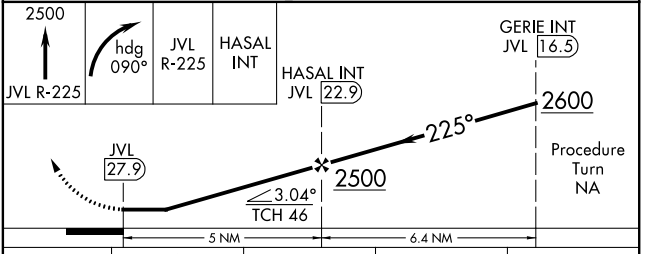
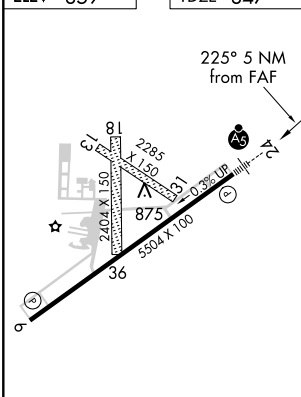


**MISSED APPROACH:** Climb to 2500 via JVL VOR/DME R-225 then right turn via heading 090° and JVL VOR/DME R-225 to HASAL INT 22.9 DME and hold.

AWOS-3 <b>120.525</b>	ROCKFORD APP CON <b>126.0 327.0</b>	CLNC DEL <b>121.85</b>	UNICOM <b>122.8 (CTAF)</b>
--------------------------	--	---------------------------	-------------------------------



ELEV 859	TDZE 847
----------	----------



FAF to MAP 5 NM					
Knots	60	90	120	150	180
Min:Sec	5:00	3:20	2:30	2:00	1:40

CATEGORY	A	B	C	D
S-24	1280-1 433 (500-1)	1280-1½ 433 (500-¼)	1280-1½ 433 (500-½)	1280-2 433 (500-2)
CIRCLING	1300-1 441 (500-1)	1340-1¼ 481 (500-¼)	1380-1½ 521 (500-½)	1440-2 581 (600-2)

EC-3, 25 FEB 2021 to 25 MAR 2021

EC-3, 25 FEB 2021 to 25 MAR 2021