

LOC/DME I-FFC 111.95 Chan 56 (Y)	APP CRS 313°	Rwy Idg TDZE Apt Elev 5568 808 808
---	------------------------	--

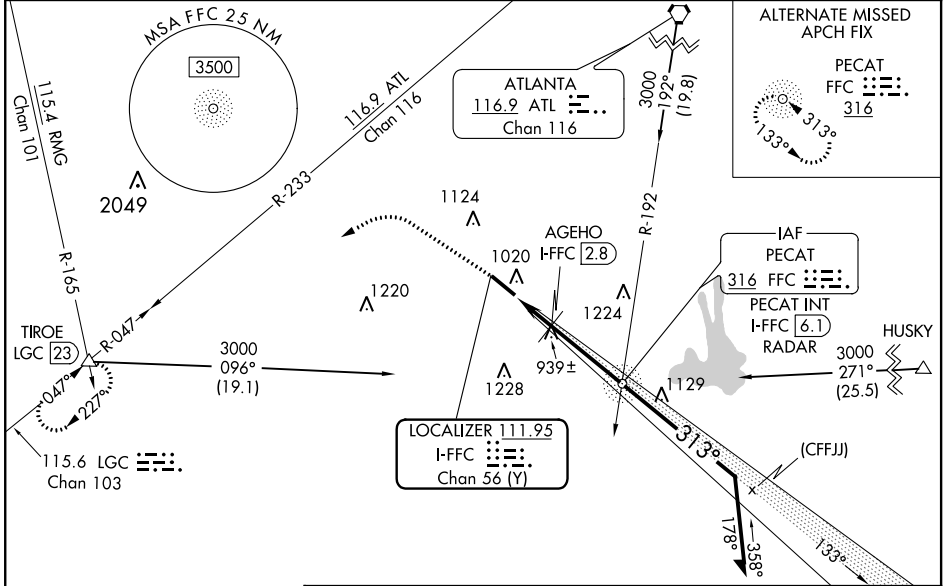
ILS or LOC RWY 31

ATLANTA RGNL FALCON FIELD (F'FC)

⚠ Inoperative table does not apply. Rwy 31 helicopter visibility reduction below 3/4 SM NA. When local altimeter setting not received, use Newnan Coweta County altimeter setting and increase all DA 47 feet and all MDA 60 feet; increase S-ILS 31 all Cats visibility 1/8 mile; increase S-LOC 31 Cats C/D and Circling Cat C visibility 1/8 mile; increase Circling Cat D visibility 1/4 mile; increase AGEHO Fix Minimums S-LOC 31 Cats C/D and Circling Cat D visibility 1/4 mile. Circling Rwy 13 NA at night.

ODALS
 ...
MISSED APPROACH: Climb to 1700 then climbing left turn to 4000 on heading 275° and LGC VORTAC R-047 to TIROE INT/LGC 23 DME and hold.

ASOS 118.525	ATLANTA APP CON 119.8 354.125	CLNC DEL 119.8	UNICOM 123.05 (CTAF) 0
------------------------	---	--------------------------	---

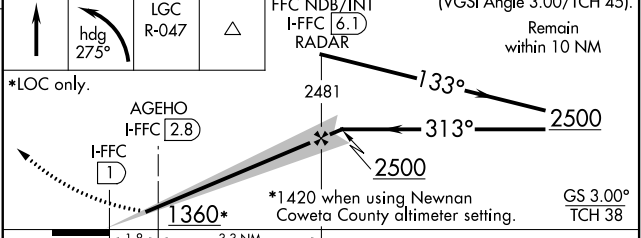
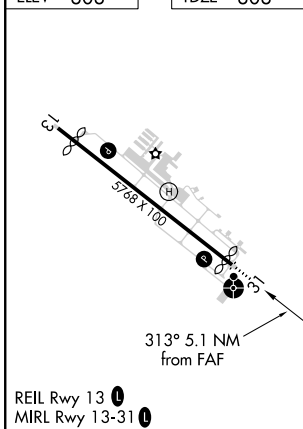


SE-4, 25 FEB 2021 to 25 MAR 2021

SE-4, 25 FEB 2021 to 25 MAR 2021

ELEV 808	TDZE 808
----------	----------

1700	4000	LGC R-047	TIROE	VGSi and ILS glidepath not coincident (VGSi Angle 3.00/TCH 45). Remain within 10 NM
------	------	-----------	-------	--



FAF to MAP 5.1 NM					
Knots	60	90	120	150	180
Min:Sec	5:06	3:24	2:33	2:02	1:42

CATEGORY	A	B	C	D
S-ILS 31	1082-1 274 (300-1)			
S-LOC 31	1360-1	552 (600-1)	1360-1 1/8	552 (600-1 1/8)
C CIRCLING	1360-1	552 (600-1)	1440-1 3/4 632 (700-1 3/4)	1540-2 1/4 732 (800-2 1/4)
AGEHO FIX MINIMUMS (DME REQUIRED)				
S-LOC 31	1200-1	392 (400-1)	1200-1 1/8	392 (400-1 1/8)
C CIRCLING	1320-1	512 (600-1)	1440-1 3/4 632 (700-1 3/4)	1540-2 1/4 732 (800-2 1/4)