

NDB FFC <b>316</b>	APP CRS <b>313°</b>	Rwy Idg TDZE Apt Elev	<b>5568</b> <b>808</b> <b>808</b>
-----------------------	------------------------	-----------------------------	---

# NDB RWY 31

ATLANTA RGNL FALCON FIELD (F'F'C)

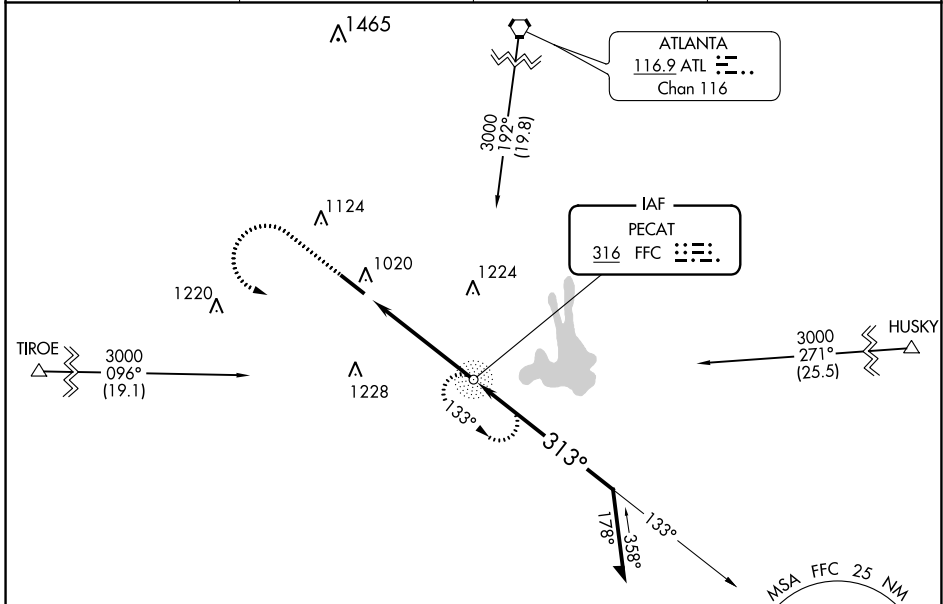
**⚠** Inop table does not apply. Helicopter visibility reduction below 3/4 SM NA. When local altimeter setting not received, use Newnan Coweta County altimeter setting and increase all MDA 60 feet; increase S-31 Cats C/D and Circling Cat C visibility 1/8 mile, and increase Circling Cat D visibility 1/4 mile. Circling Rwy 13 NA at night.

**⚠ NA**

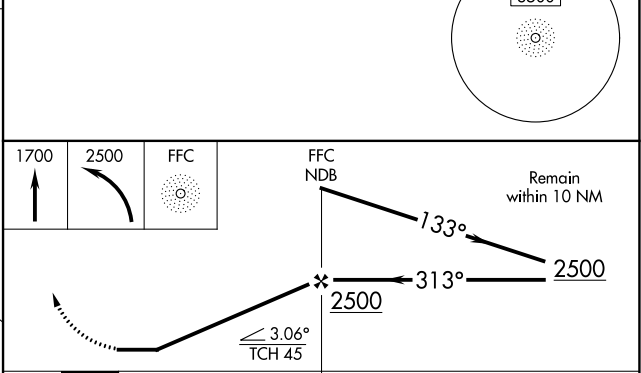
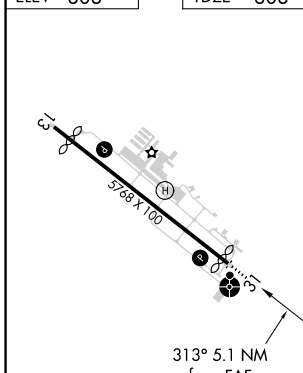
**ODALS**

**MISSED APPROACH:** Climb to 1700 then climbing left turn to 2500 direct FFC NDB and hold.

ASOS <b>118.525</b>	ATLANTA APP CON <b>119.8 354.125</b>	CLNC DEL <b>119.8</b>	UNICOM <b>123.05 (CTAF)</b>
------------------------	---	--------------------------	--------------------------------



ELEV 808	TDZE 808
----------	----------



CATEGORY	A	B	C	D
S-31	1360-1	552 (600-1)	1360-1 1/8	552 (600-1 1/8)
CIRCLING	1360-1	552 (600-1)	1360-1 1/8	1440-2 632 (700-2)

SE-4, 25 FEB 2021 to 25 MAR 2021

SE-4, 25 FEB 2021 to 25 MAR 2021