


LOC I-FFM 111.5	APP CRS 308°	Rwy Idg 5639
		TDZE 1182
		Apt Elev 1183

ILS or LOC RWY 31

FERGUS FALLS MUNI-EINAR MICKELSON FIELD (FFM)

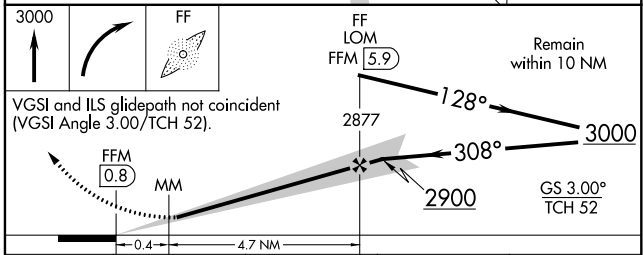
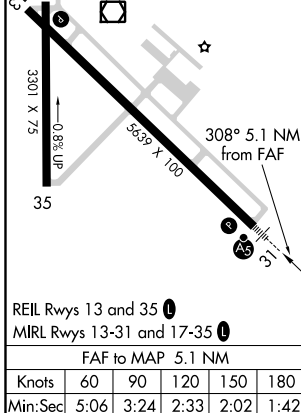
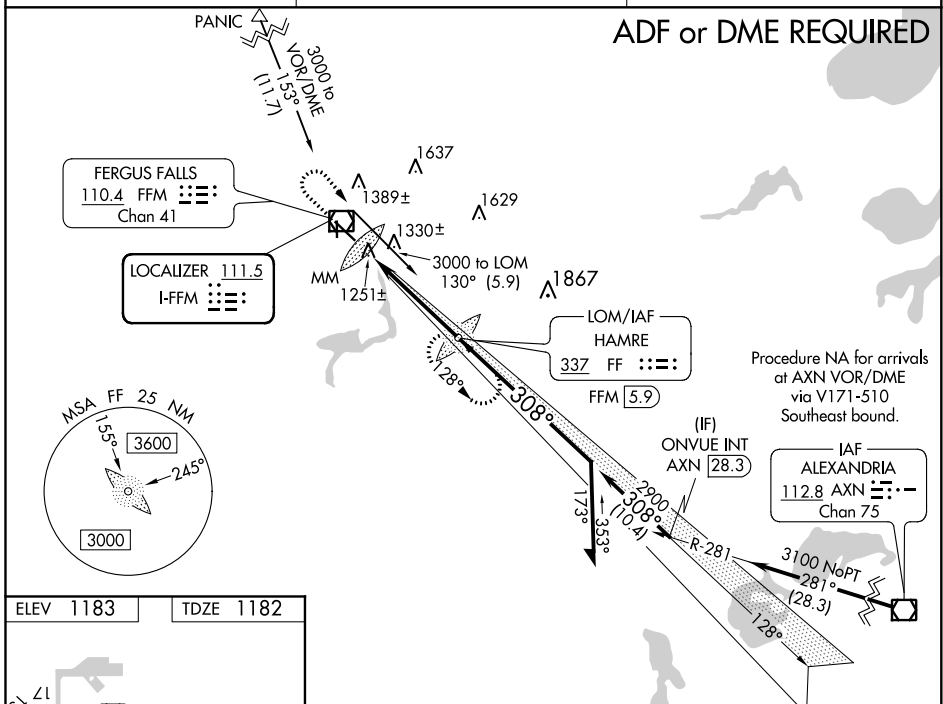
⚠ When local altimeter setting not received, use Wheaton altimeter setting and increase all DA 102 feet and all MDA 120 feet, increase S-LOC 31 and Circling Cat C and D visibility ½ mile. For inoperative MALSR, increase S-LOC 31 Cat D visibility ¼ mile. For inoperative MALSR when using Wheaton altimeter setting, increase S-LS 31 all Cats visibility ½ mile. GS unusable for coupled approaches below 1400.

MALSR

MISSED APPROACH: Climb to 3000 then right turn direct HAMRE LOM/FFM 5.9 DME and hold.

AWOS-3
110.4

MINNEAPOLIS CENTER
126.1 269.2

UNICOM
122.8 (CTAF) 0



CATEGORY	A	B	C	D
S-ILS 31	1382-½ 200 (200-½)			
S-LOC 31	1520-½ 338 (400-½)		1520-¾ 338 (400-¾)	
CIRCLING	1640-1 457 (500-1)	1740-1 557 (600-1)	1740-1½ 557 (600-1½)	1880-2¼ 697 (700-2¼)

NC-1, 25 FEB 2021 to 25 MAR 2021

NC-1, 25 FEB 2021 to 25 MAR 2021