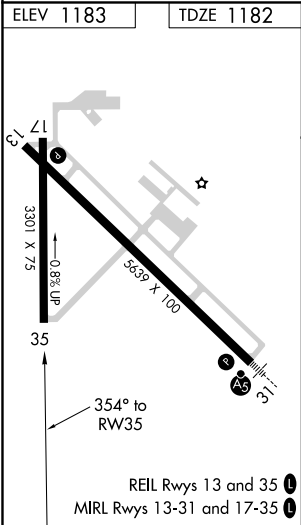
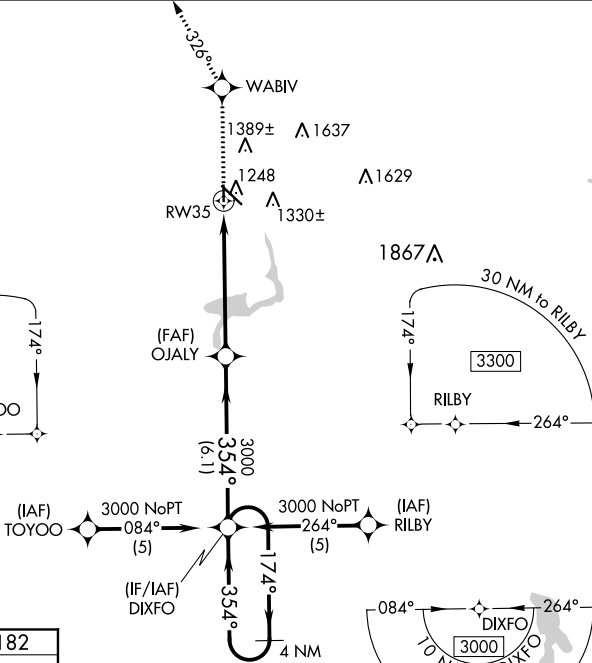
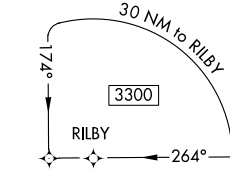
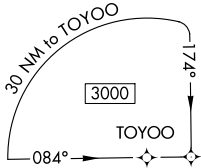
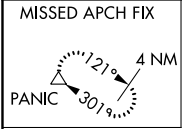


APP CRS	Rwy Idg	<b>3301</b>
<b>354°</b>	TDZE	<b>1182</b>
	Apt Elev	<b>1183</b>

# RNAV (GPS) RWY 35

FERGUS FALLS MUNI-EINAR MICKELSON FIELD (F'FM)

<p><b>▼</b> DME/DME RNP-0.3 NA. When local altimeter setting not received, use Wheaton altimeter setting and increase all MDA 120 feet and LNAV Cat C visibility ¼ mile, Circling Cat C ½ mile. VDP NA when using Wheaton altimeter setting.</p>	<p><b>▲</b> MISSED APPROACH: Climb to 3000 direct WABIV and via track 326° to PANIC and hold.</p>	
<p>AWOS-3 <b>110.4</b></p>	<p>MINNEAPOLIS CENTER <b>126.1 269.2</b></p>	<p>UNICOM <b>122.8 (CTAF) 0</b></p>



3000	WABIV	PANIC	4 NM Holding Pattern
↑	✧	△	
	tr 326°		
	OJALY	DIXFO	
	0.9 NM to RW35	354°	174°
	3000	354°	3000
	3.05° TCH 40		
	0.9	4.6 NM	6.1 NM
CATEGORY	A	B	C
LNAV MDA	1500-1 318 (400-1)		
CIRCLING	1640-1 457 (500-1)	1740-1 557 (600-1)	1740-1½ 557 (600-1½)
			NA

NC-1, 25 FEB 2021 to 25 MAR 2021

NC-1, 25 FEB 2021 to 25 MAR 2021