

VOR/DME FFM 110.4 Chan 41	APP CRS 115°	Rwy ldg TDZE 1182 Apt Elev 1183
---	------------------------	---

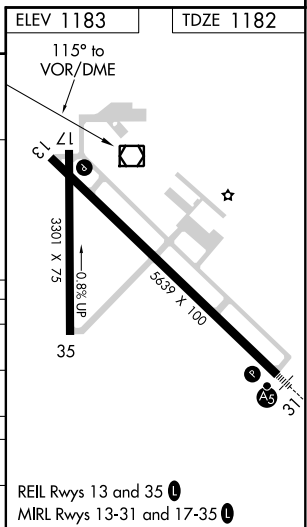
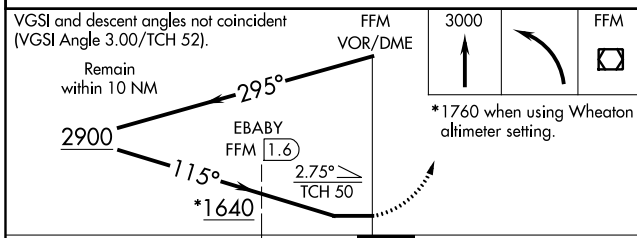
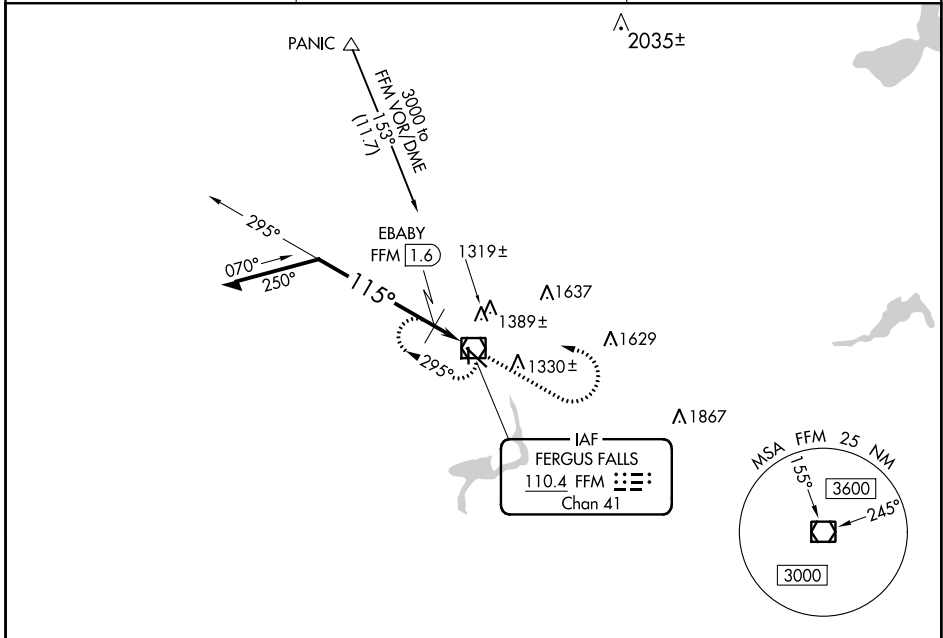
VOR RWY 13

FERGUS FALLS MUNI-EINAR MICKELSON FIELD (FFM)

NA Cat D straight-in minima NA when using Wheaton altimeter setting. When local altimeter setting not received, use Wheaton altimeter setting and increase all MDA 120 feet, and S-13 Cat C and D visibility 1/2 mile, Circling Cat C and D visibility 1/2 mile, increase EBABY fix minimums S-13 and Circling Cat C and D visibility 1/2 mile.

MISSED APPROACH: Climb to 3000 then left turn direct FFM VOR/DME and hold.

AWOS-3 110.4	MINNEAPOLIS CENTER 126.1 269.2	UNICOM 122.8 (CTAF) 0
------------------------	--	---------------------------------



CATEGORY	A	B	C	D
S-13	1640-1	458 (500-1)	1640-1 1/4 458 (500-1 1/4)	1640-1 1/2 458 (500-1 1/2)
CIRCLING	1640-1 457 (500-1)	1740-1 557 (600-1)	1740-1 1/2 557 (600-1 1/2)	1880-2 1/4 697 (700-2 1/4)
EBABY FIX MINIMUMS				
S-13	1580-1 398 (400-1)			1580-1 1/4 398 (400-1 1/4)
CIRCLING	1640-1 457 (500-1)	1740-1 557 (600-1)	1740-1 1/2 557 (600-1 1/2)	1880-2 1/4 697 (700-2 1/4)

NC-1, 25 FEB 2021 to 25 MAR 2021

NC-1, 25 FEB 2021 to 25 MAR 2021