

ILS or LOC RWY 23R

LOC I-FFO 109.7	APCH CRS 233°	Rwy Ldg THRE 12,600 823 Arprt Elev 823
---------------------------	-------------------------	--

AL-108 [USAF]

WRIGHT-PATTERSON AFB (KFFO)

▼ *When ALS inop, increase RVR to 40 and vis to $\frac{3}{8}$ mile.
 **When ALS inop, increase CAT AB RVR to 55 and vis to 1 mile, CAT CDE vis to $\frac{1}{8}$ miles.

ALSF-1
 † MISSED APPROACH: Climb via FFO R-233 to 2000, at 3 DME turn left direct CLACK to 3000 and hold.

ATIS
124.475 269.9

COLUMBUS APP CON
118.85 269.275

PATTERSON TOWER
126.9 281.45

GND CON
121.8 335.8

*** When Rwy 23R VGSI inop, circling to Rwy 23R NA at night.

† Missed approach requires use of RNAV or ATC radar monitoring.

1290
 ▲

PATTERSON
Chan 99 FFO

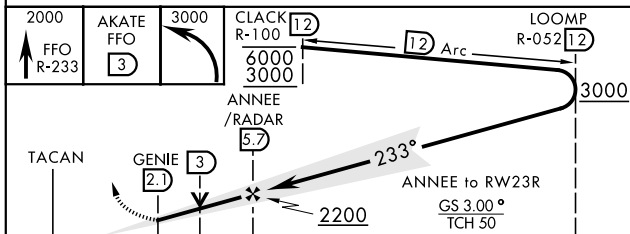
LOCALIZER 109.7
I-FFO

2049
 ▲

DME or RADAR REQUIRED FOR LOCALIZER

1210
 ▲

EMERG SAFE ALT 100 NM 3700



CATEGORY	A	B	C	D	E
S-ILS 23R *	1023/24		200	(200- $\frac{1}{2}$)	
S-LOC 23R **	1320/24 497 (500- $\frac{1}{2}$)		1320/50 497 (500-1)		
CIRCLING ***	1380-1 557 (600-1)	1440-1 617 (600-1)	1560-2 737 (800-2)	1620-2 $\frac{1}{2}$ 797 (800-2 $\frac{1}{2}$)	1620-2 $\frac{3}{4}$ 797 (800-2 $\frac{3}{4}$)

ELEV 823	THRE 823
----------	----------

ILS or LOC RWY 23R

EC-2, 25 FEB 2021 to 25 MAR 2021

EC-2, 25 FEB 2021 to 25 MAR 2021