

ILS or LOC RWY 5L

LOC I-FAE 109.7	APCH CRS 053°	Rwy ldg 12,600 TDZE 803 Arprt Elev 823
---------------------------	-------------------------	---

AL-108 [USAF]

WRIGHT-PATTERSON AFB (KFFO)

▼ * When ALS inop, increase RVR to 40 and vis to ½ mile.
** When ALS inop, increase CAT AB RVR to 55 and vis to 1 mile, CAT CDE vis to 1 ½ miles.



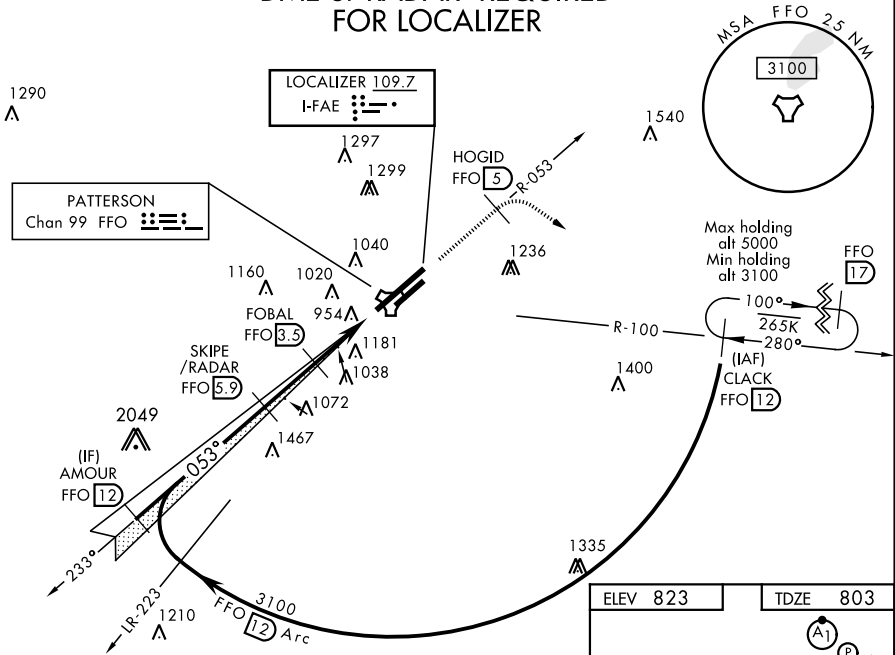
↑ MISSED APPROACH: Climb to 2000 via FFO R-053 at 5 DME, turn right direct CLACK climbing to 3100 and hold.

ATIS 124.475 269.9	COLUMBUS APP CON 118.85 269.275	PATTERSON TOWER 126.9 281.45	GND CON 121.8 335.8
------------------------------	---	--	-------------------------------

*** When Rwy 23R VGSi inop, circling to Rwy 23R NA at night.

↑ Missed approach requires use of RNAV or ATC radar monitoring.

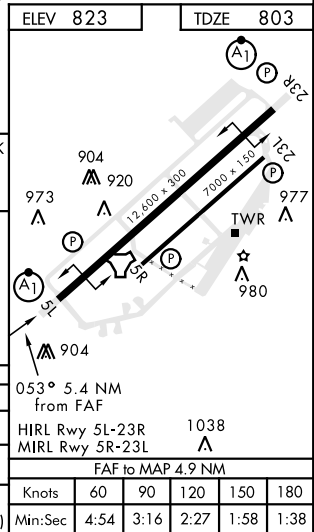
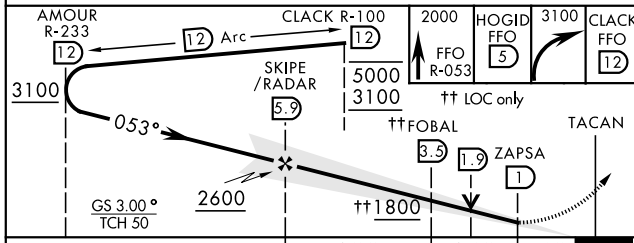
DME or RADAR REQUIRED FOR LOCALIZER



EC-2, 25 FEB 2021 to 25 MAR 2021

EC-2, 25 FEB 2021 to 25 MAR 2021

EMERG SAFE ALT 100 NM 3700



CATEGORY	A	B	C	D	E
S-ILS 5L *	1003/24		200	(200-½)	
S-LOC 5L **	1280/24	476 (500-½)	1280/50	476 (500-1)	
CIRCLING ***	1380-1 557 (600-1)	1440-1 617 (700-1)	1560-2 737 (800-2)	1620-2½ 797 (800-2½)	1620-2¾ 797 (800-2¾)

ELEV 823	TDZE 803
053° 5.4 NM from FAF	
HIRL Rwy 5L-23R	1038
MIRL Rwy 5R-23L	NA
FAF to MAP 4.9 NM	
Knots	60 90 120 150 180
Min:Sec	4:54 3:16 2:27 1:58 1:38

ILS or LOC RWY 5L