

DAYTON, OHIO

RNAV (GPS) RWY 23R

19171

APCH CRS	Rwy Idg	12,600
233°	TDZE	823
	Arpt Elev	823

AL-108 (USAF)

WRIGHT PATTERSON AFB (KFFO)

▼ * When ALS inop, increase CAT AB RVR to 55, vis to 1 mile; CAT CD vis to 1 3/8 miles.
 ** When Rwy 23R VGSi inop, circling to Rwy 23R NA at night.

ALS-F-1

MISSED APPROACH: Turn left climb to 3000 direct WLLBA waypoint and hold.

ATIS
124.475 269.9

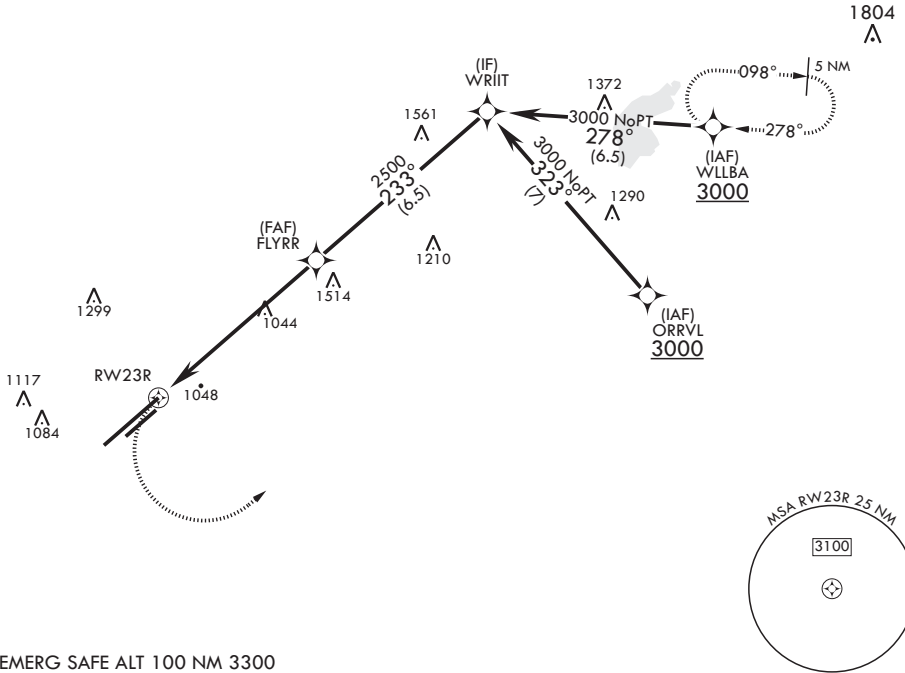
COLUMBUS APP CON/DEP CON
118.85 269.275

PATTERSON TOWER
126.9 281.45

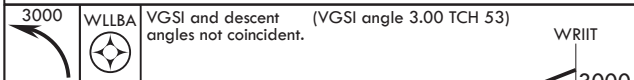
GND CON
121.8 335.8

DME/DME RNP-0.3 NA

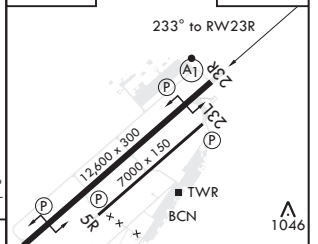
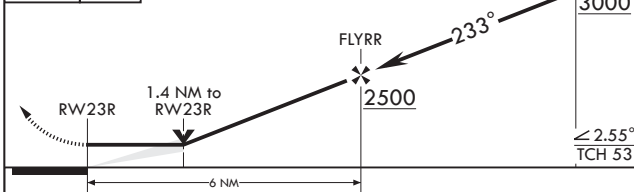
1323



EMERG SAFE ALT 100 NM 3300



ELEV 823 **TDZE 823**



CATEGORY	A	B	C	D
LNVA MDA*	1320/24	497 (500-1/2)	1320/50	497 (500-1)
C CIRCLING**	1380-1 557 (600-1)	1440-1 617 (700-1)	1560-2 737 (800-2)	1620-2 1/2 797 (800-2 1/2)

MIRL Rwy 5R-23L
 HIRL Rwy 5L-23R

DAYTON, OHIO

39°50'N - 84°03'W

WRIGHT PATTERSON AFB (KFFO)

Amdt 5 13OCT16

RNAV (GPS) RWY 23R

EC-2, 25 FEB 2021 to 25 MAR 2021

EC-2, 25 FEB 2021 to 25 MAR 2021