

TACAN RWY 23R

TACAN FFO Chan 99	APCH CRS 230°	Rwy Ldg THRE 12,600 Arprt Elev 823	AL-108 [USAF]	WRIGHT-PATTERSON AFB (KFFO)
--------------------------	----------------------	---	---------------	-----------------------------

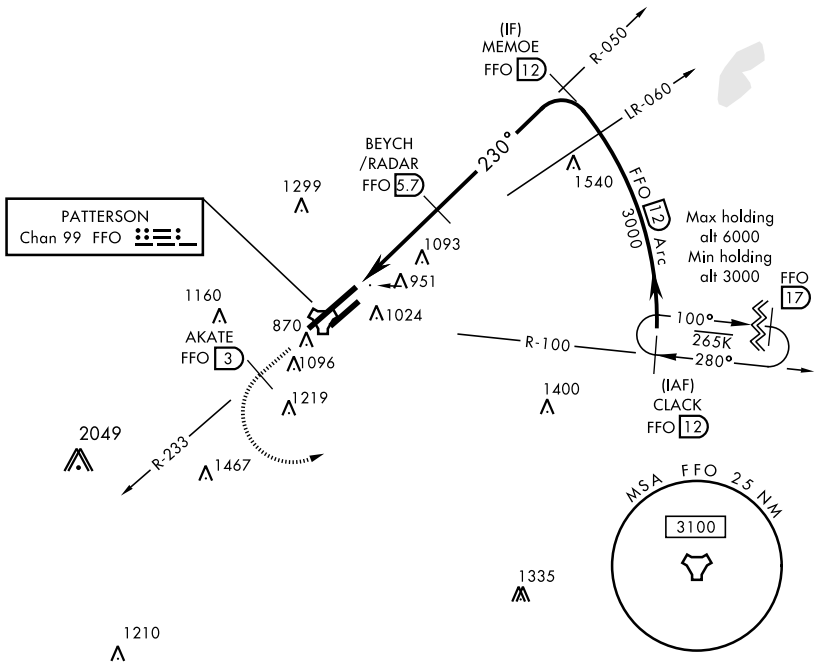
▼ * When ALS inop, increase CAT AB RVR to 55 and vis to 1 mile, CAT CDE vis to 1½ miles.

 ALSF-1

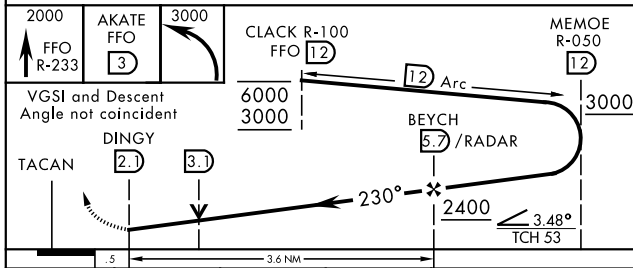
 † MISSED APPROACH: Climb to 2000 via FFO R-233, at 3 DME turn left direct CLACK climbing to 3000 and hold.

ATIS 124.475 269.9	COLUMBUS APP CON 118.85 269.275	PATTERSON TOWER 126.9 281.45	GND CON 121.8 335.8
------------------------------	---	--	-------------------------------

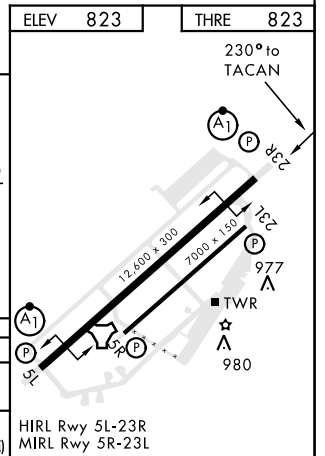
** When Rwy 23R VGSI inop, circling to Rwy 23R NA at night.
† Missed approach requires use of RNAV or ATC radar monitoring.



EMERG SAFE ALT 100 NM 3700



CATEGORY	A	B	C	D	E
	1360/24 537 (600-½)		1360/55	537	(600-1)
S-23R *	1380-1 557 (600-1)	1440-1 617 (700-1)	1560-2 737 (800-2)	1620-2½ 797 (800-2½)	1620-2¾ 797 (800-2¾)
CIRCLING **	1380-1 557 (600-1)	1440-1 617 (700-1)	1560-2 737 (800-2)	1620-2½ 797 (800-2½)	1620-2¾ 797 (800-2¾)



TACAN RWY 23R

EC-2, 25 FEB 2021 to 25 MAR 2021

EC-2, 25 FEB 2021 to 25 MAR 2021