

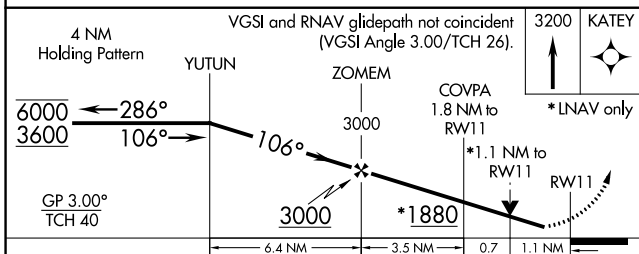
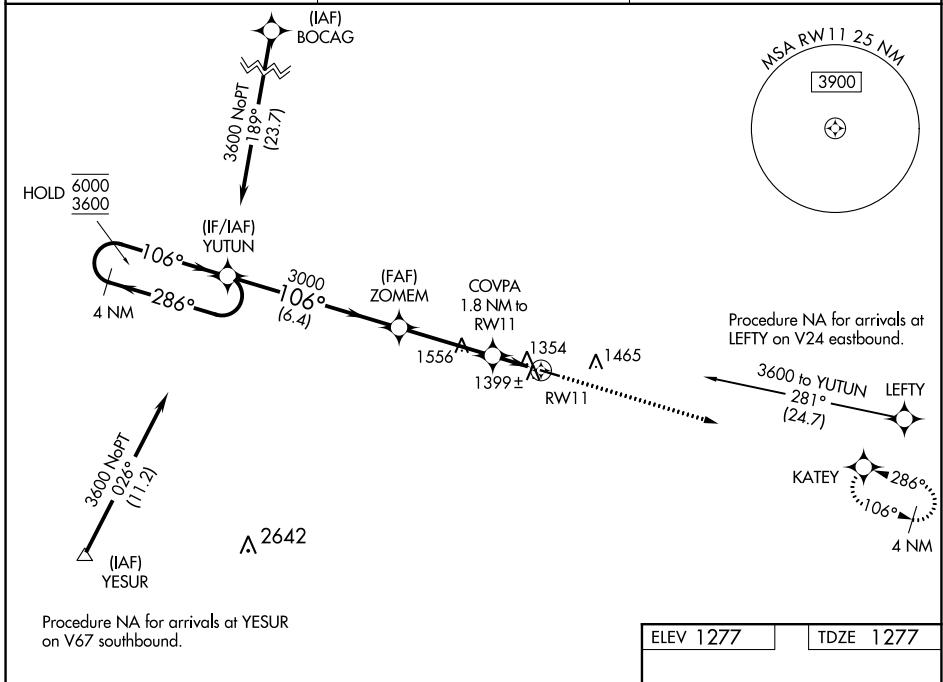
WAAS CH <b>65829</b> <b>W11A</b>	APP CRS <b>106°</b>	Rwy Idg TDZE Apt Elev	<b>4001</b> <b>1277</b> <b>1277</b>
--	------------------------	-----------------------------	---

# RNAV (GPS) RWY 11

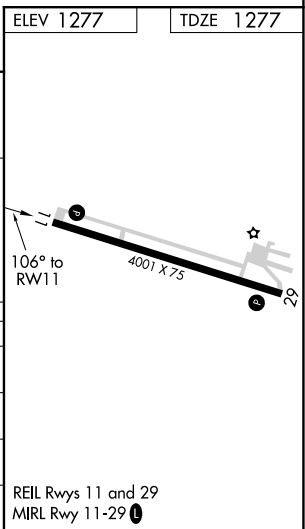
FILLMORE COUNTY (FKA)

RNP APCH.	<p><b>▼</b> Rwy 11 helicopter visibility reduction below 3/4 SM NA.</p> <p><b>▲</b> For uncompensated Baro-VNAV systems, LNAV/VNAV NA below -17°C or above 54°C.</p>	MISSED APPROACH: Climb to 3200 direct KATEY and hold.
-----------	--	---

AWOS-3 <b>118.55</b>	ROCHESTER APP CON ★ <b>119.8 251.125</b>	CTAF <b>122.9 0</b>
-------------------------	---	------------------------



CATEGORY	A	B	C	D
LPV DA		1527-1 250 (300-1)		NA
LNAV/VNAV DA		1573-1 296 (300-1)		NA
LNAV MDA	1660-1	383 (400-1)	1660-1 3/8 383 (400-1 1/8)	NA
<b>C</b> CIRCLING	1700-1 423 (500-1)	1900-1 623 (700-1)	1900-1 3/4 623 (700-1 3/4)	NA



NC-1, 25 FEB 2021 to 25 MAR 2021

NC-1, 25 FEB 2021 to 25 MAR 2021