

WAAS CH 90227 W27A	APP CRS 270°	Rwy Idg TDZE Apt Elev	4977 40 40
--	------------------------	-----------------------------	---------------------------------------

RNAV (GPS) RWY 27

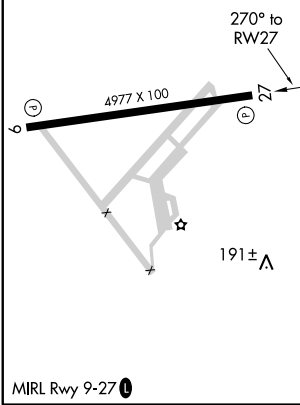
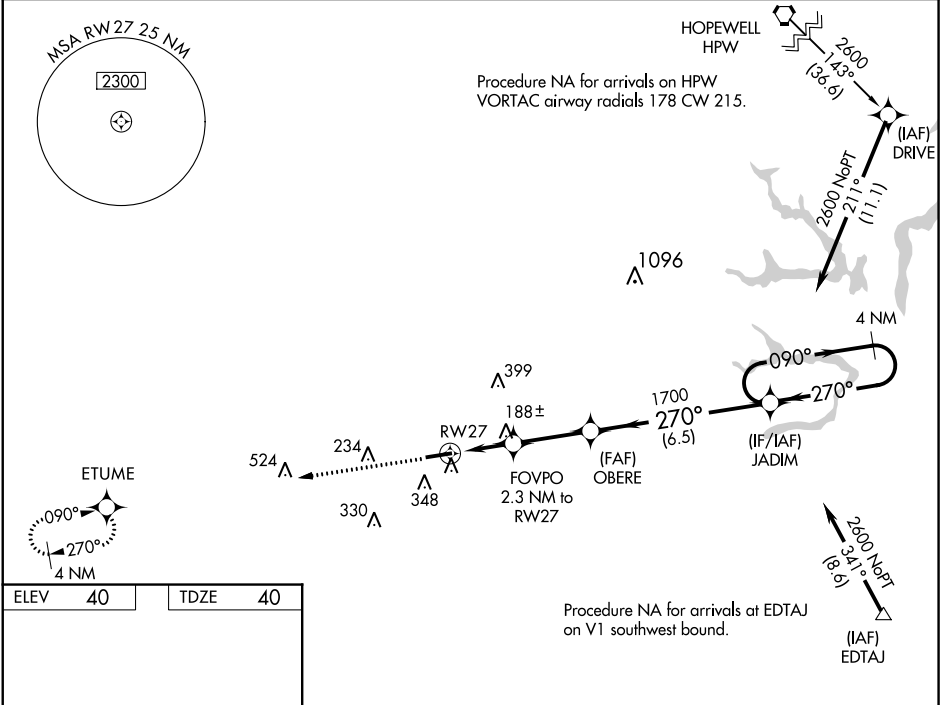
FRANKLIN RGNL (F'KN)

RNP APCH.

⚠ For uncompensated Baro-VNAV systems, LNAV/VNAV NA below -15°C or above 54°C. Baro-VNAV and VDP NA when using Suffolk altimeter setting. When local altimeter setting not received, use Suffolk altimeter setting: increase LPV DA to 404 feet and visibility all Cats 1/8 SM; increase LNAV/VNAV DA to 392 feet and visibility all Cats 1/4 SM; increase all MDA 40 feet and LNAV Cats C/D visibility 1/8 SM. Rwy 27 helicopter visibility reduction below 3/4 SM NA.

MISSED APPROACH: Climb to 2600 direct ETUME and hold.

AWOS-3PT 124.675	NORFOLK APP CON 127.9 269.425	UNICOM 122.8 (CTAF) 0
----------------------------	---	---------------------------------



2600	ETUME	* LNAV only.	JADIM	4 NM Holding Pattern
		FOVPO 2.3 NM to RW27	OBERE 1700	2600
		* 1.1 NM to RW27		GP 3.00° TCH 40
		* 800	1700	
		1.1 NM 1.2 NM 2.8 NM 6.5 NM		
CATEGORY	A	B	C	D
LPV DA		366-1 1/8	326 (400-1 1/8)	
LNAV/VNAV DA		354-1	314 (400-1)	
LNAV MDA	440-1	400 (400-1)	440-1 1/8	400 (400-1 1/8)

NE-3, 25 FEB 2021 to 25 MAR 2021

NE-3, 25 FEB 2021 to 25 MAR 2021