

WAAS CH <b>86327</b> <b>W09A</b>	APP CRS <b>090°</b>	Rwy Idg TDZE Apt Elev	<b>4977</b> <b>35</b> <b>40</b>
--	------------------------	-----------------------------	---------------------------------------

# RNAV (GPS) RWY 9

FRANKLIN RGNL (F'KN)

RNP APCH.

**⚠** Baro-VNAV NA when using Suffolk altimeter setting. For uncompensated Baro-VNAV systems, LNAV/VNAV NA below -1.5°C or above 54°C. When local altimeter setting not received, use Suffolk altimeter setting: increase LPV DA to 358 feet and visibility all Cats ½ SM; increase LNAV/VNAV DA to 357 feet and visibility all Cats ½ SM; increase all MDA 40 feet and LNAV Cats C/D visibility ½ SM. Rwy 9 helicopter visibility reduction below 1 SM NA. Procedure NA at night.

**MISSED APPROACH:**  
Climb to 2600 direct JADIM and hold.

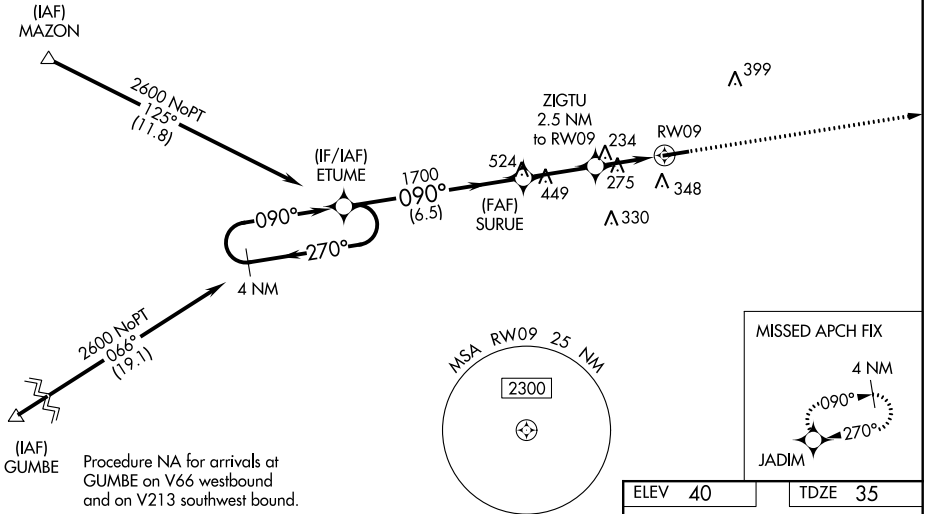
AWOS-3PT  
**124.675**

NORFOLK APP CON  
**127.9 269.425**

UNICOM  
**122.8 (CTAF) ①**

Procedure NA for arrivals at MAZON on V266 westbound.

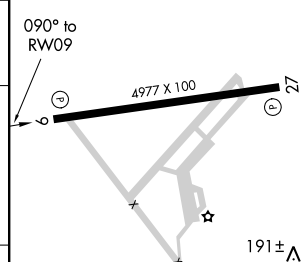
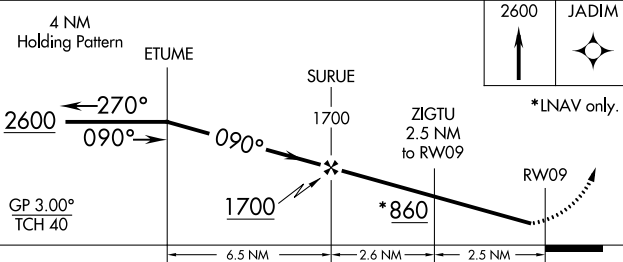
1096 **⚠**



NE-3, 25 FEB 2021 to 25 MAR 2021

NE-3, 25 FEB 2021 to 25 MAR 2021

ELEV 40	TDZE 35
---------	---------



CATEGORY	A	B	C	D
LPV DA		320-1	285 (300-1)	
LNAV/VNAV DA		319-1	284 (300-1)	
LNAV MDA	580-1	545 (600-1)	580-1½	545 (600-1½)

MIRL Rwy 9-27 ①