

(ARKES4.ARKES) 18088

AL-744 (FAA)

FORT LAUDERDALE/HOLLYWOOD INTL (FLL)

# ARKES FOUR DEPARTURE (RNAV)

FORT LAUDERDALE, FLORIDA

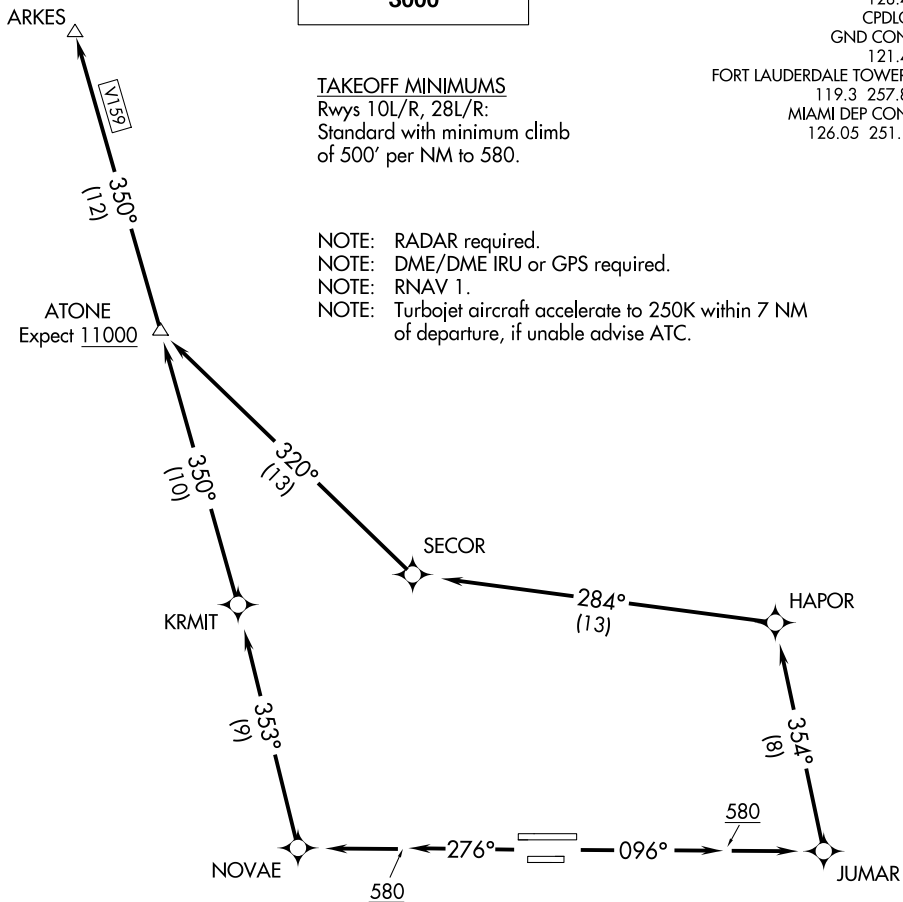
**TOP ALTITUDE:  
3000**

D-ATIS 135.0  
CLNC DEL  
128.4  
CPDLC  
GND CON  
121.4  
FORT LAUDERDALE TOWER  
119.3 257.8  
MIAMI DEP CON  
126.05 251.1

### TAKEOFF MINIMUMS

Rwys 10L/R, 28L/R:  
Standard with minimum climb  
of 500' per NM to 580.

- NOTE: RADAR required.
- NOTE: DME/DME IRU or GPS required.
- NOTE: RNAV 1.
- NOTE: Turbojet aircraft accelerate to 250K within 7 NM of departure, if unable advise ATC.



NOTE: Chart not to scale.



### DEPARTURE ROUTE DESCRIPTION

TAKEOFF RWYS 10L/R: Climb heading 096° to 580, then direct JUMAR, then turn left on track 354° to HAPOR, then on depicted route to ARKES, thence. . .

TAKEOFF RWYS 28L/R: Climb heading 276° to 580, then direct NOVAE, then on depicted route to ARKES, thence. . .

. . . maintain 3000 or as assigned by ATC. Expect clearance to filed altitude 10 minutes after departure.

# ARKES FOUR DEPARTURE (RNAV)

(ARKES4.ARKES) 25JUN15

FORT LAUDERDALE, FLORIDA

FORT LAUDERDALE/HOLLYWOOD INTL (FLL)

SE-3, 25 FEB 2021 to 25 MAR 2021

SE-3, 25 FEB 2021 to 25 MAR 2021