

MIAMI APP CON
133.775 285.6
FLL D-ATIS
135.0
FXE ATIS
119.85
HWO ATIS
135.475
OPF ATIS
125.9
PMP ATIS
120.55

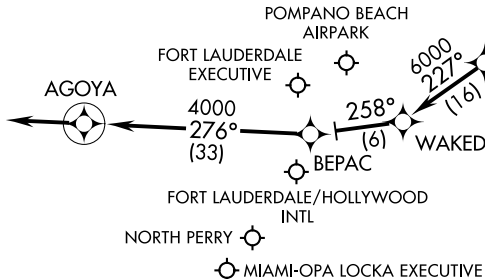
NOTE: RADAR required.
NOTE: RNAV 1.
NOTE: DME/DME/IRU or GPS required.
NOTE: Turbojet aircraft only.

NOTE: Treasure transition: ATC assigned only.

ARRIVAL ROUTE DESCRIPTION

- CRANS TRANSITION (CRANS.FISEL7)
- FREEPORT TRANSITION (ZFP.FISEL7)
- MELBOURNE TRANSITION (MLB.FISEL7)
- ORMOND BEACH TRANSITION (OMN.FISEL7)
- TREASURE TRANSITION (TRV.FISEL7)

From FISEL on track 227° to WAKED, then on track 258° to BEPAC, then on track 276° to AGOYA, then on 276° heading or as assigned by ATC. Expect RADAR vectors.



NOTE: Landing FXE, HWO, OPF, PMP: Expect RADAR vectors prior to WAKED.
NOTE: FLL Landing West: Expect RADAR vectors to final approach course after FISEL.
NOTE: FLL Landing East: Expect RADAR vectors to final approach course prior to AGOYA.

NOTE: Chart not to scale.

SE-3, 25 FEB 2021 to 25 MAR 2021

SE-3, 25 FEB 2021 to 25 MAR 2021