

LOC/DME I-FLL <b>111.75</b> Chan 54 (Y)	APP CRS <b>096°</b>	Rwy Idg TDZE Apt Elev	<b>8000</b> <b>14</b> <b>65</b>
---	------------------------	-----------------------------	---------------------------------------

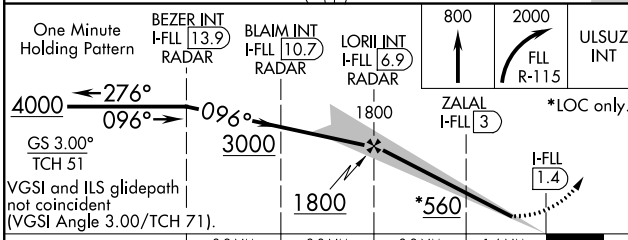
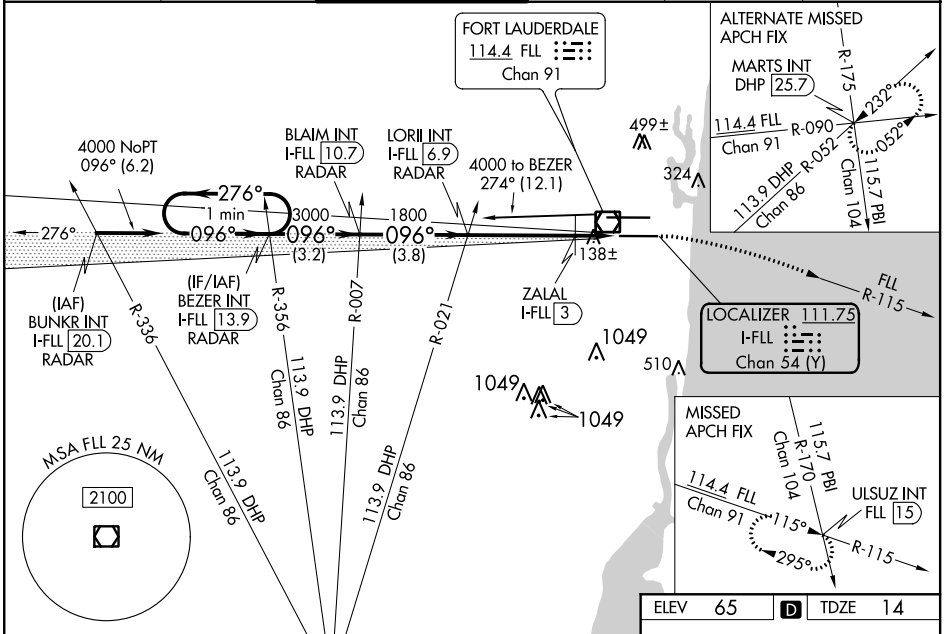
# ILS or LOC RWY 10R

FORT LAUDERDALE/HOLLYWOOD INTL (FLL)

**Simultaneous approach authorized. Rwy 10R helicopter visibility reduction below RVR 4000 NA. Inop table does not apply to S-ILS 10R all Cats. For inop ALS, increase S-LOC 10R Cat D visibility to 1 $\frac{1}{2}$  SM. For inop ALS when using ZALAL FIX minimums, increase S-LOC 10R Cat D visibility to 1 $\frac{1}{2}$  SM.**

**MAJSF** MISSED APPROACH: Climb to 800 then climbing right turn to 2000 on FLL VOR/DME R-115 to ULSUZ INT/FLL 15 DME and hold.

D-ATIS <b>135.0</b>	MIAMI APP CON <b>133.775 285.6</b>	<b>FORT LAUDERDALE TOWER</b> <b>119.3 257.8</b>	GND CON <b>121.4</b>	CLNC DEL <b>128.4</b>	CPDLC
------------------------	---------------------------------------	--	-------------------------	--------------------------	-------



ELEV 65	<b>D</b>	TDZE 14
---------	----------	---------

**096° 5.5 NM from FAF**

**HIRL Rwy 10L-28R and 10R-28L**

**FAF to MAP 5.5 NM**

Knots	60	90	120	150	180
Min:Sec	5:30	3:40	2:45	2:12	1:50

CATEGORY	A	B	C	D
S-ILS 10R		264/40	250 (200- $\frac{3}{4}$ )	
S-LOC 10R	560/40	546 (500- $\frac{3}{4}$ )	560-1 $\frac{3}{8}$	546 (500-1 $\frac{3}{8}$ )
<b>C</b> CIRCLING	680-1	615 (700-1)	800-2 735 (800-2)	800-2 $\frac{1}{4}$ 735 (800-2 $\frac{1}{4}$ )
<b>ZALAL FIX MINIMUMS (DME REQUIRED)</b>				
S-LOC 10R	400/40	386 (400- $\frac{3}{4}$ )	400/55	386 (400-1)
<b>C</b> CIRCLING	680-1	615 (700-1)	800-2 735 (800-2)	800-2 $\frac{1}{4}$ 735 (800-2 $\frac{1}{4}$ )

SE-3, 25 FEB 2021 to 25 MAR 2021

SE-3, 25 FEB 2021 to 25 MAR 2021