


WAAS CH 61002 W28A	APP CRS 276°	Rwy Idg TDZE Apt Elev	8394 7 65
----------------------------------------	------------------------	-----------------------------	--------------------------------------

RNAV (GPS) Y RWY 28R

FORT LAUDERDALE/HOLLYWOOD INTL (FLL)

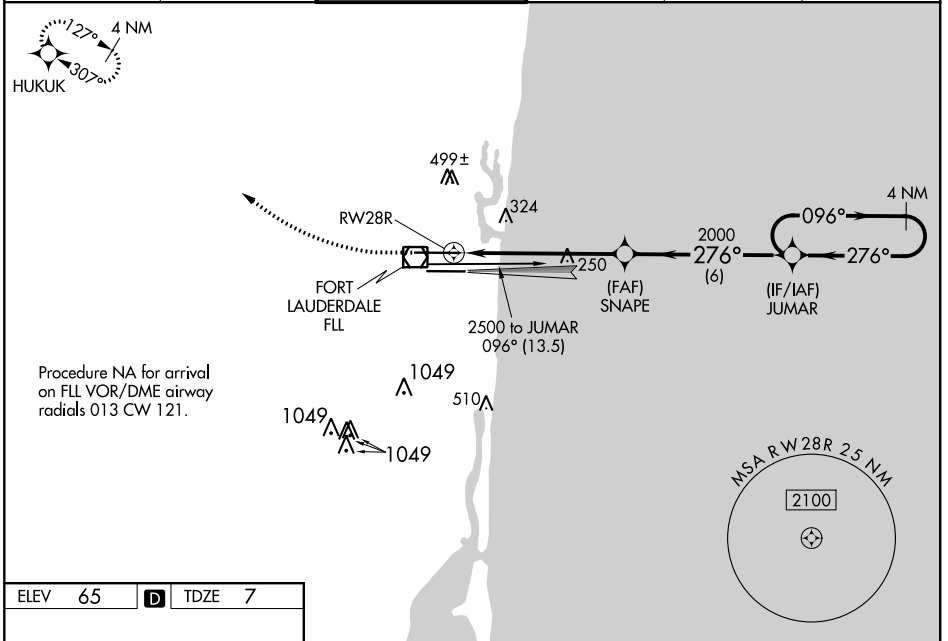
RNP APCH.

⚠ For uncompensated Baro-VNAV systems, LNAV/VNAV NA below 5°C (40°F) or above 54°C (130°F). Inop table does not apply to LPV all Cats. LNAV procedure NA during simultaneous operations. Use of FD or AP required during simultaneous operations. Simultaneous approach authorized. For inop ALS, increase LNAV Cats C/D visibility to 1¾ SM.

MALSR 

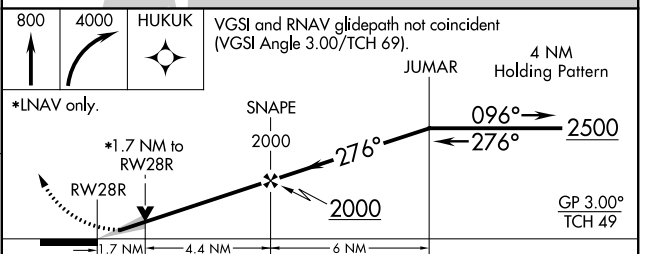
MISSED APPROACH: Climb to 800 then climbing right turn to 4000 direct HUKUK and hold, continue climb-in-hold to 4000.

D-ATIS 135.0	MIAMI APP CON 133.775 285.6	FORT LAUDERDALE TOWER 119.3 257.8	GND CON 121.4	CLNC DEL 128.4	CPDLC
------------------------	---------------------------------------	----------------------------------------------------	-------------------------	--------------------------	-------



ELEV 65	D	TDZE 7
---------	----------	--------

HIRL Rwy 10L-28R and 10R-28L



CATEGORY	A	B	C	D
LPV DA		257/40	250 (200-¾)	
LNAV/VNAV DA		594-1½	587 (600-1½)	
LNAV MDA	620/24	613 (700-½)	620-1¾	613 (700-1¾)
C CIRCLING	680-1	615 (700-1)	800-2 735 (800-2)	800-2¼ 735 (800-2¼)

SE-3, 25 FEB 2021 to 25 MAR 2021

SE-3, 25 FEB 2021 to 25 MAR 2021