

THNDR FOUR DEPARTURE (RNAV)

FORT LAUDERDALE, FLORIDA

SE-3, 25 FEB 2021 to 25 MAR 2021

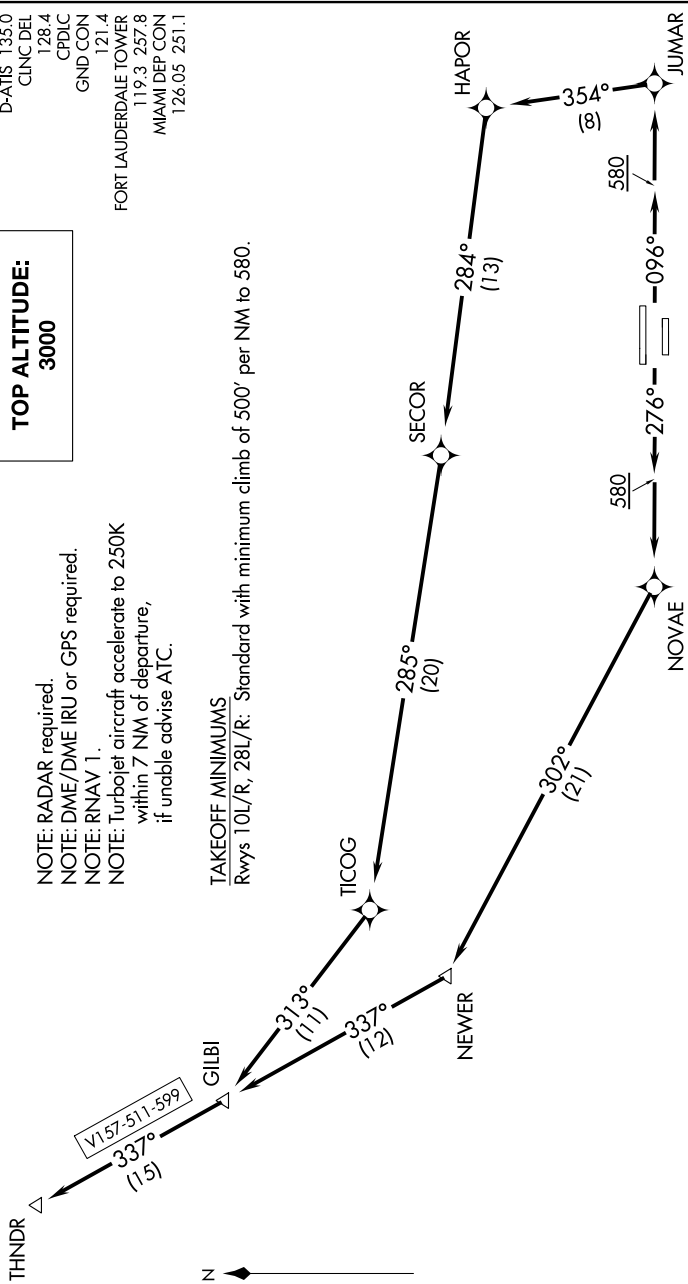
D-ATIS 135.0
 CLNC DEL 128.4
 CPDIC
 GND CON 121.4
 FORT LAUDERDALE TOWER 119.3 257.8
 MIAMI DEP CON 126.05 251.1

TOP ALTITUDE:
3000

NOTE: RADAR required.
 NOTE: DME/DME IRU or GPS required.
 NOTE: RNAV 1.
 NOTE: Turbojet aircraft accelerate to 250K within 7 NM of departure, if unable advise ATC.

TAKEOFF MINIMUMS

Rwys 10L/R, 28L/R: Standard with minimum climb of 500' per NM to 580.



NOTE: Chart not to scale.

DEPARTURE ROUTE DESCRIPTION

TAKEOFF RWYS 10L/R: Climb heading 096° to 580, then direct JUMAR, then left turn on 354° track to HAPOR, then on depicted route to THNDR, thence

TAKEOFF RWYS 28L/R: Climb heading 276° to 580, then direct NOVAE, then on depicted route to THNDR, thence

. . . . maintain 3000 or as assigned by ATC. Expect clearance to filed altitude 10 minutes after departure.