

# ZAPPA FOUR DEPARTURE (RNAV)

FORT LAUDERDALE, FLORIDA

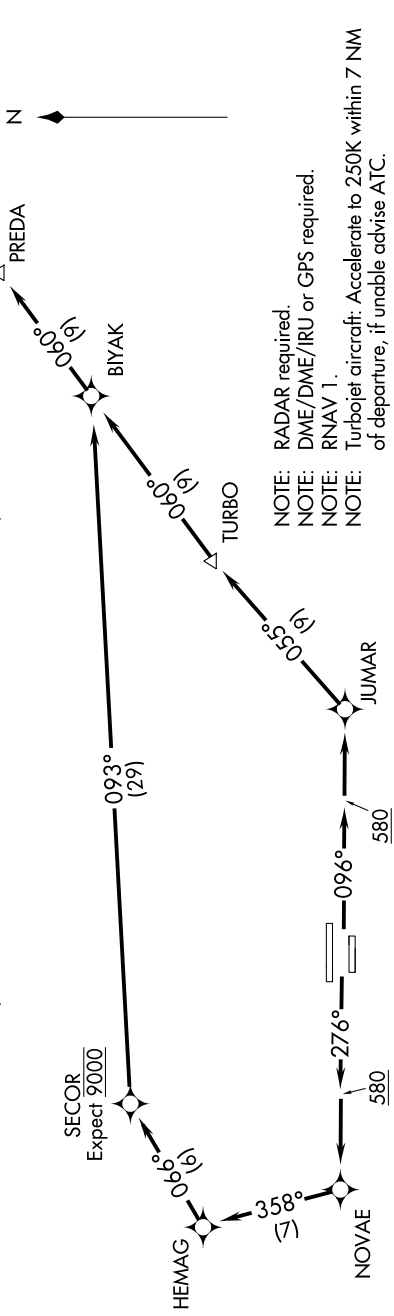
SE-3, 25 FEB 2021 to 25 MAR 2021

D-ATIS 135.0  
 CLNC DEL 128.4  
 CPDIC  
 GND CON 121.4  
 FORT LAUDERDALE TOWER 119.3 257.8  
 MIAMI DEP CON 126.05 251.1

**TOP ALTITUDE:**  
**3000**

### TAKEOFF MINIMUMS

Rwys 10L/R, 28L/R: Standard with minimum climb of 500' per NM to 580.



- NOTE: RADAR required.
- NOTE: DME/DME/IRU or GPS required.
- NOTE: RNAV 1.
- NOTE: Turbojet aircraft: Accelerate to 250K within 7 NM of departure, if unable advise ATC.

NOTE: Chart not to scale.

### DEPARTURE ROUTE DESCRIPTION

TAKEOFF RWYS 10L/R: Climb heading 096° to 580, then direct JUMAR, then on depicted route to ZAPPA, thence. . . .

TAKEOFF RWYS 28L/R: Climb heading 276° to 580, then direct NOVAE, then on depicted route to ZAPPA, thence. . . .

. . . maintain 3000 or as assigned by ATC. Expect clearance to filed altitude 10 minutes after departure.

# ZAPPA FOUR DEPARTURE (RNAV)

SE-3, 25 FEB 2021 to 25 MAR 2021