

FORT MYERS APP CON *
125.15 306.2
FMY ATIS
123.725
RSW D-ATIS
124.65

ARRIVAL ROUTE DESCRIPTION

BAGGS TRANSITION (BAGGS.TYNEE2)
CODGR TRANSITION (CODGR.TYNEE2)
FRZBE TRANSITION (FRZBE.TYNEE2)
PLYER TRANSITION (PLYER.TYNEE2)

From TYNEE on track 149° to PASTR, thence...

...Landing KRSW Rwy 6: from PASTR on track 107° to LENPE, then on heading 107° or as assigned by ATC. Expect RADAR vectors to final approach course.

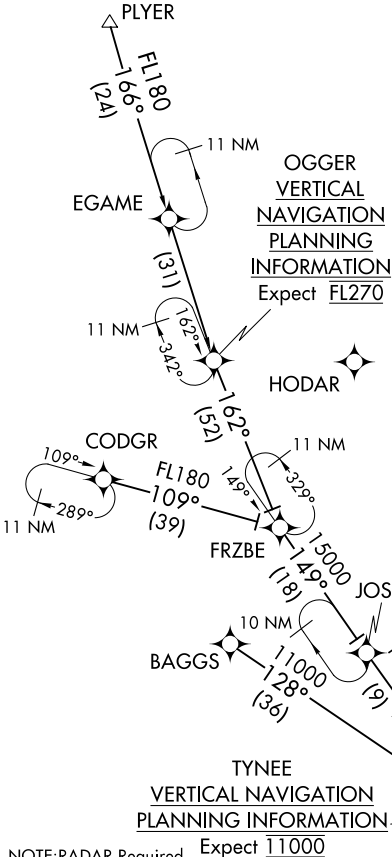
...Landing KRSW Rwy 24: from PASTR on track 129° to LLMER, then on track 086° to SPNKE, then on track 058° to COOPR, then on heading 058° or as assigned by ATC. Expect RADAR vectors to final approach course.

...Landing KFMY: from TYNEE on heading 149° or as assigned by ATC. Expect RADAR vectors to final approach course.

LOST COMMUNICATIONS:

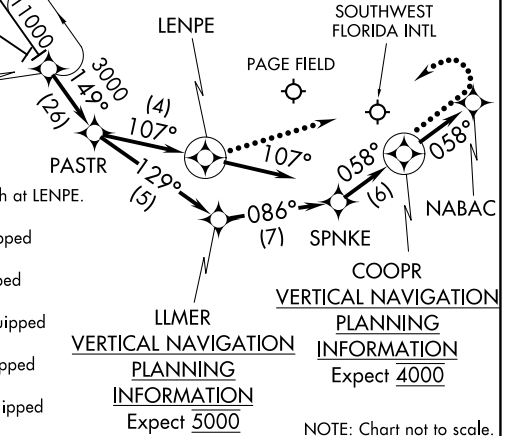
KRSW landing Rwy 6: track to LENPE, intercept approach.

KRSW landing Rwy 24: track to COOPR, then proceed direct to NABAC, turn left to intercept Rwy 24 approach.



TYNEE
VERTICAL NAVIGATION
PLANNING INFORMATION
Expect 11000

- NOTE:RADAR Required.
- NOTE:RNAV 1.
- NOTE:DME/DME/IRU or GPS Required.
- NOTE:Turbopjet and Turboprop aircraft only.
- NOTE:KRSW landing Rwy 6: expect to intercept approach at LENPE.
- NOTE:FRZBE TRANSITION: ATC assigned only.
- NOTE:FRZBE TRANSITION to COOPR: for non-GPS equipped aircraft TRV and CYY must be operational.
- NOTE:FRZBE TRANSITION to LENPE: for non-GPS equipped aircraft TRV must be operational.
- NOTE:CODGR TRANSITION to COOPR: for non-GPS equipped aircraft PIE, TRV and CYY must be operational.
- NOTE:CODGR TRANSITION to LENPE: for non-GPS equipped aircraft PIE and TRV must be operational.
- NOTE:BAGGS TRANSITION to COOPR: for non-GPS equipped aircraft CYY and RSW must be operational.



VERTICAL NAVIGATION
PLANNING
INFORMATION
Expect 5000

VERTICAL NAVIGATION
PLANNING
INFORMATION
Expect 4000

NOTE: Chart not to scale.

SE-3, 25 FEB 2021 to 25 MAR 2021

SE-3, 25 FEB 2021 to 25 MAR 2021