

LOC I-TUN <b>109.9</b>	APP CRS <b>274°</b>	Rwy Idg TDZE Apt Elev	<b>7201</b> <b>770</b> <b>782</b>
---------------------------	------------------------	-----------------------------	---


# ILS or LOC RWY 27

BISHOP INTL (F'NT)

DME or RADAR required for procedure entry. DME or RADAR required.

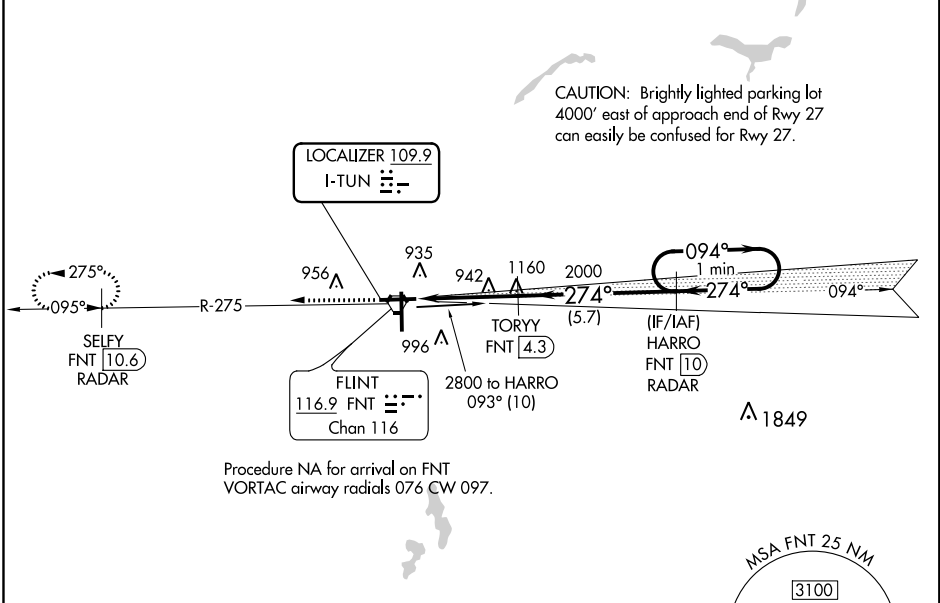
**V** DME from FNT VORTAC. Simultaneous reception of I-TUN and FNT DME required. For inop ALS, increase S-LOC 27 Cat A/B visibility to 1 SM, and Cat C/D visibility to 1½ SM.

**A** ASR

**MALSR** 

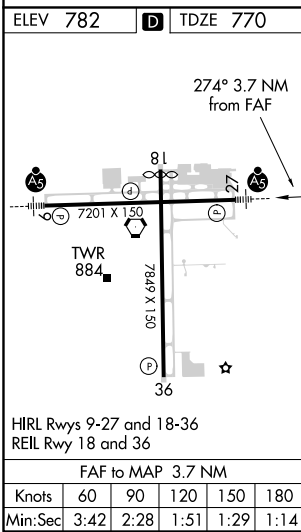
**MISSED APPROACH:** Climb to 2600 on FNT VORTAC R-275 direct SELFY/FNT VORTAC 10.6 DME/RADAR and hold.

ATIS <b>133.15</b>	GREAT LAKES APP CON ★ <b>118.8 257.9</b>	FLINT TOWER ★ <b>126.3 (CTAF) 0257.9</b>	GND CON <b>121.9</b>	CLNC DEL <b>121.75</b>	UNICOM <b>122.95</b>
-----------------------	---	---	-------------------------	---------------------------	-------------------------



EC-1, 25 FEB 2021 to 25 MAR 2021

EC-1, 25 FEB 2021 to 25 MAR 2021



2600	FNT R-275	SELY FNT 10.6 RADAR	TORYY FNT 4.3	HARRO FNT 10 RADAR	One Minute Holding Pattern
*LOC only.					
FNT 0.6		*FNT 2	2000	2000	2800
-1.4 NM		-2.3 NM	-5.7 NM		
CATEGORY	A	B	C	D	
S-ILS 27	970-½		200 (200-½)		
S-LOC 27	1260-½		490 (500-½)		1260-1 490 (500-1)
<b>C</b> CIRCLING	1260-1 478 (500-1)		1300-1 518 (600-1)		1300-1½ 518 (600-1½) 1520-2¼ 738 (800-2¼)

GS 3.00° TCH 56